



# PRODUCT CATALOG

THE EXCELLENT CHICKEN



# Superior Differences

## WHY BELL & EVANS?



**100% Raised Without Antibiotics & Organic Chicken**



**NO COMMODITY**  
*Only Premium Chicken Production*



**100% U.S. Grown Grains**  
*Including all organic grains*



**NO IMPORTS**  
*Traceable Grain, Supporting U.S. Farmers*



**100% Expeller-Pressed Soybean Meal**



**NO HEXANE PROCESSING**  
*Because You Are What You Eat*



**100% Slow Induction Anesthesia**



**NO ELECTRIC STUNNING**  
*Only Humane Practices*



**100% Air Chilled**



**NO HYBRID OR WATER SYSTEM**  
*No Chlorinated or Retained Water*



**100% X-Ray of Boneless Product**  
*Designed for minuscule fish bones*



**NO SHORTCUTS**  
*Uncompromising Quality*



**#1 PETE Recyclable Tray Packs**



**NO STYROFOAM**  
*Leak Free & Freezer Safe Too!*



**Family Business**  
*Including breeder and broiler farms*



**NOT FOR SALE**  
*5th Generation Family Owned*



Left to Right: Margo Sechler, Scott Sechler Sr, Scott Sechler Jr

## A MESSAGE FROM THE SECHLERS—

Bell & Evans has worked hard for over 125 years to be the trusted source for premium grade poultry in America. We protect that **TRUST** with **Transparency** into our operations, **Revolutionary** practices, **Uncompromising** quality, **Service** to our families and community, and **Teamwork**. We are very selective in choosing partners for good reason and work only with like-minded businesses that put people first. Congratulations, and thank you, for being a part of our story.

Our family is very excited to host partners for visits and tours of our incredible Organic-Certified Chicken Harvesting Facility. Like our world-renowned Hatchery that opened in 2017 and our Further Processing and Packaging Facility that opened in 2015, our harvesting

facility that began operations in December 2021, is cutting-edge and built for longevity. Here, we maximize efforts in food safety, product quality, meaningful animal welfare, team member safety and comfort, and overall sustainability. No one in poultry invests back into its business like Bell & Evans and no other food plant in the U.S. compares!

In this product guide, we describe key differences that put Bell & Evans in a category of its own. We offer best practices in merchandising, many point of sale materials and other resources to drive success. Let's get to work and grow our program together!

  
**OWNER & CHAIRMAN**

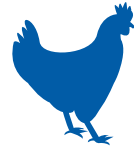
# Superior Standards

All Bell & Evans chicken, Organic and RWA, have the same Superior Standards from Hatch to Harvest.



## 100% of Bell & Evans Chickens are Raised Without Antibiotics

- No antibiotics injected into the egg OR given before the second day of life, shortcuts that are allowed by the National Organic Standard
- Superior farm standards and quality feed reduce potential illness
- All vegetarian U.S. grain diet with our own blend of natural ingredients like oregano oil to support natural gut health



## 100% of Bell & Evans Chickens are Humanely Treated

- Best-in-class breed for natural growth
- Immediate access to food and water at hatch
- Cement floors for thorough cleanout after each flock
- Fresh litter for every flock to minimize ammonia
- Enrichments for physical activity
- Windows for natural light
- Limited travel time from farm to facility
- SIA System for a humane harvest



## 100% of Bell & Evans Chicken is Produced for Superior Quality

- 100% organic-certified processing facilities
- 100% Air Chill processing for all product
- Vision graded 3x including before evisceration
- Expertly hand trimmed products
- X-ray bone detection on all boneless product
- Prepared items are nitrogen frozen and sold uncooked for the best eating experience at home
- Leak free, freezer safe recyclable tray packaging

## THE ORGANIC DIFFERENCE

### Outdoor Access

Organically raised chickens have outdoor access when the weather permits.



### Fed Organic Grains

100% U.S. Grown Organic Grains are used for traceability and authenticity.



## Why don't we need antibiotics?

Like humans, chickens are healthiest when they live in a clean, low-stress environment, consume a quality diet, and get plenty of exercise and rest. Thanks to our extra measures through their entire life cycle, necessities for good health, our chickens are happy and healthy and do not need to be treated with antibiotics.

Bell & Evans chickens have been Raised Without Antibiotics since 1998. *Those are some happy, healthy chicks!*

## What do our chickens eat?

*"You are what you eat,"* so we feed our chickens an all-vegetarian diet of U.S. corn and soybeans that are expeller pressed, not hexane processed, with essential vitamins and natural ingredients to provide gut health. No junk in our chicken feed!



# Superior Animal Welfare



## FROM HATCH

### Breed

We manage our breeder operations for full control. Our breed, "Das Klassenbester" or "Best in Class", is created by the practice of selecting parent stock based on welfare attributes and protein quality.

### Hatch

Eggs are hatched in our World's First Organic Certified, Humane Animal Welfare Focused Chicken Hatchery.

### Chicks

At hatch, our chicks have immediate access to organic-certified feed, fresh water and light. No other producer in the U.S. offers early feeding. Other chicks can wait up to 3 days for food and water.

### Handling

Chicks stay in the comfort of the same baskets where they hatched until they reach the farms. No mechanical handling!

### Transport

Our advanced chick trailers monitor temperature, humidity and CO2 levels for safe transport to the farm.

## TO THE FARM

### Cement Floors With Raised Curbs

Cement floors and curbs in all chicken houses prevent rodents or pests from tunneling into barns, bringing in unwanted diseases. Cement floors also allow for a thorough cleanout between flocks.

### Cooling Cells

Cold water runs down the cells. Fans at the other end of the barn draw cool air from the cells and throughout the barn for a temperature-controlled environment.

### Fresh Litter

Barns are thoroughly disinfected between flocks and every new flock receives fresh litter. This keeps bacteria and ammonia levels down, good for chickens and people.

### Windows

Windows allow in daylight, promoting a natural activity period during the day with a rest period at night. Commodity producers use light schedules to promote growth.

### Enrichments

Enrichments in our chicken houses like ramps and tunnels keep chickens active.

## AND HARVEST

### Roomy Drawers

Chickens are humanely caught at the farms and placed into roomy drawers with extra headroom allowing increased ventilation on the trailer. The commute is short since our farms are located within an hour, on average, of our facilities.

### Trailers

Our trailers have curtained sides to protect chickens from weather elements and minimize stress during travel.

### Automated Unloading

The first in the U.S., the entire trailer of chickens is slowly moved into the facility via a conveyor system without fork trucks. No mechanical or human handling!

### Calming Conditions

Our temperature-controlled live receiving room has blue lighting that appears dark to the birds to minimize stress but gives team members plenty of light to work.

### Slow Induction Anesthesia (SIA)

While in their same baskets, birds pass through SIA where oxygen and tempered CO2 gas humanely put them to sleep for harvest.

# What is 100% Air Chill?

Not only is our chicken Air Chilled, but it is 100% Air Chilled.  
What does this mean?



## 100% Air Chilled

100% Air Chilled means that we ONLY use cold air to chill our chickens during processing, no chlorinated water baths or hybrid systems. 100% Air Chill has been our practice since 2005, and we upgraded our system in 2021 at the new harvesting plant.



## 100% of Bell & Evans chickens are 100% Air Chilled

When we say our chicken is 100% Air Chilled, we mean 100% of our chicken. Consistent superior quality across all of our product lines is important to maintaining the trust of our customers. No confusing labels or misleading practices here!



## No Diapers!

With conventional chilling systems, chickens absorb up to 12% of their body weight in added chlorinated water. This water weeps out of the meat and is trapped in the absorbent pad (or “diaper”) at the bottom of most fresh chicken packaging. Not ours!

## How Does it Work?

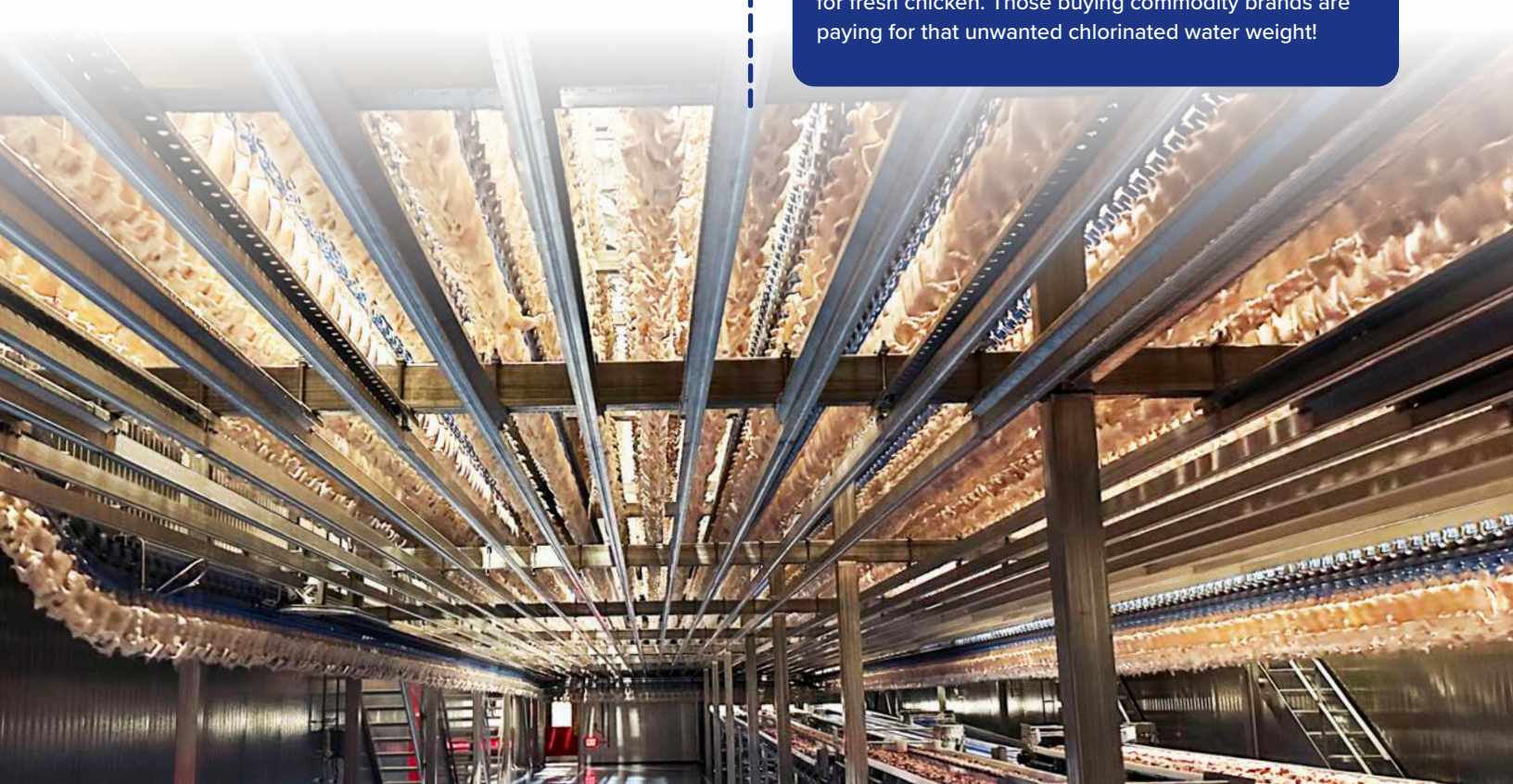
100% Air Chill uses cold air to reduce the birds' temperature during processing instead of chlorinated water baths used in most chicken production in the U.S. Our system quickly cold sears the exterior of the bird to lock in its natural juices. A second, longer phase slowly equilibrates the overall temperature of the bird.

- More Flavor
- Natural Juice
- Tenderization
- Less Water Usage

## 100% Air Chilled vs Air Chilled

In North America, most producers that claim to use “Air Chill” really use a hybrid system that combines chlorinated water chill with air chill. Bell & Evans was the first in the U.S. to transition to 100% Air Chill in 2005, and we upgraded our system again in 2021.

Think about it...Consumers (and you!) pay by weight for fresh chicken. Those buying commodity brands are paying for that unwanted chlorinated water weight!



# Superior Packaging



### Fully Recyclable

Think all plastics are recyclable? Think again. Only #1 PETE is accepted by most recycling centers.

### Freezer Safe

You can pop this package right into your freezer. No freezer burn!

### BPA Free

BPA is a synthetic compound found in many plastics, especially food containers. Traces can sometimes be found in the food you eat.

### Vacuum Sealed

Raw food doesn't like oxygen. We vacuum seal to keep our poultry fresh and to prevent freezer burn.

### No Leaks

Sealed tight for no leaks! Keeping your coolers and cases clean and dry.

### No Diapers

No unwanted chlorinated water pick-up, so no need for a diaper!

### EZ Open

The top film is easy to peel back thanks to the EZ Open tab.

### Marinate

Marinate right in the tray! Peel back the film, add in your favorite marinade, replace the film and refrigerate until use!

### Stackable

You gain extra holding power in your case or well, and your customer gains extra space in their refrigerator or freezer!



**CASE READY**

# Organic Standard Traypack

# RWA Standard Traypack



**22011**

Organic Boneless, Skinless Chicken Breasts

GTIN: 90738985220115

**22014**

Organic Cut Chicken Wings

GTIN: 90738985220146

**22117**

Organic Chicken Tenders

GTIN: 90738985221174

**22298**

Organic Thin Sliced BS Chicken Breast

GTIN: 90738985222980



**22003**

Boneless, Skinless Chicken Breasts

GTIN: 90738985220030



**22007**

Cut Chicken Wings

GTIN: 90738985220078



**22001**

Chicken Tenders

GTIN: 90738985220016



**22023**

Thin Sliced BS Chicken Breast

GTIN: 90738985220238



**22018**

Organic Chicken Legs

GTIN: 90738985220184



**22012**

Organic Boneless, Skinless Chicken Thighs

GTIN: 90738985220122



**22016**

Organic Chicken Drumsticks

GTIN: 90738985220160



**22020**

Organic Chicken Thighs

GTIN: 90738985220207



**22009**

Chicken Legs

GTIN: 90738985220092



**22005**

Boneless, Skinless Chicken Thighs

GTIN: 90738985220054



**22008**

Chicken Drumsticks

GTIN: 90738985220085



**22022**

Chicken Thighs

GTIN: 90738985220221



**22019**

Organic Split Halves Chicken Breast\*

GTIN: 90738985220191



**22170**

Organic Boneless, Skin-On Chicken Legs

GTIN: 90738985221709



**22021**

Split Halves Chicken Breast\*

GTIN: 90738985220214



**22297**

Chicken Half\*

GTIN: 90738985222973



**22345**

Chicken Drumstick Lollipops

GTIN: 90738985223451



**22354**

Boneless, Skin On Breast

GTIN: 90738985223543

## PRODUCT SPECS - Standard Trays

|   |                                    |  |
|---|------------------------------------|--|
| <b>SHELF LIFE:</b> 18 Days              | <b>PACK:</b> 12 Trays / *10 Trays  | <b>CASE:</b> 17.31" x 9.81" x 9.94" (0.98ft <sup>3</sup> ) |
| <b>CODE DATE:</b> Use or Freeze By Date | <b>TI HI:</b> 10 x 7               | <b>PALLET CUBE:</b> 82.96 ft <sup>3</sup>                  |
| <b>AVERAGE TRAY WEIGHT:</b> 1.5-2 lbs   | <b>TRAY:</b> 9.19" x 8.35" x 1.77" | <b>TARE:</b> 0.13 lb / 2.1 oz                              |

## PRODUCT SPECS - Standard Trays

|   |                                    |   |
|---|------------------------------------|---|
| <b>SHELF LIFE:</b> 18 Days              | <b>PACK:</b> 12 Trays / *10 Trays  | <b>CASE:</b> 17.31" x 9.81" x 9.94" (0.98 ft <sup>3</sup> ) |
| <b>CODE DATE:</b> Use or Freeze By Date | <b>TI HI:</b> 10 x 7               | <b>PALLET CUBE:</b> 82.96 ft <sup>3</sup>                   |
| <b>AVERAGE TRAY WEIGHT:</b> 1.5-2 lbs   | <b>TRAY:</b> 9.19" x 8.35" x 1.77" | <b>TARE:</b> 0.13 lb / 2.1 oz                               |

\*Not Pictured BSO Thigh 22355

## 22399 *New!* Boneless Skinless Breast Strips

- ✓ Drive sales with endless meal solutions
- ✓ Cross merchandise to drive basket and item count
- ✓ Ready to season and cook right out of the package



- Salads
- One Pot meals
- Rice Bowls
- Casseroles
- Stir Fry
- **And More!**

Our Boneless Skinless Chicken Breast meat cut precisely for the perfect fajita strip! Marinate or season right in the tray.



### Nutrition Facts

Serving Size 4oz (112g)  
Servings Per Container 4

| Amount Per Serving                        |       |                       |
|---|-------|-----------------------|
| <b>Calories</b>                           | 120   | Calories from Fat 10  |
|   |       | <b>% Daily Value*</b> |
| <b>Total Fat</b>                          | 1.5g  | 2%                    |
| <b>Saturated Fat</b>                      | 0g    | 0%                    |
| <b>Trans Fat</b>                          | 0g    |                       |
| <b>Cholesterol</b>                        | 75mg  | 25%                   |
| <b>Sodium</b>                             | 70mg  | 3%                    |
| <b>Potassium</b>                          | 340mg | 10%                   |
| <b>Total Carbohydrate</b>                 | 0g    | 0%                    |
| <b>Dietary Fiber</b>                      | 0g    | 0%                    |
| <b>Sugars</b>                             | 0g    |                       |
| <b>Protein</b>                            | 27g   |                       |
| <b>Vitamin A</b> 0% • <b>Vitamin C</b> 0% |       |                       |
| <b>Calcium</b> 8% • <b>Iron</b> 2%        |       |                       |

\*Percent Daily Values are based on a 2,000 calorie diet.

**INGREDIENTS:** Chicken



### PRODUCT SPECS - Fajita

|   |                                    |   |
|---|------------------------------------|---|
| <b>SHELF LIFE:</b> 14 Days              | <b>CASE PACK:</b> 12 Trays         | <b>CASE:</b> 19.25" x 14.875" x 4.875"    |
| <b>CODE DATE:</b> Use or Freeze By Date | <b>TI HI:</b> 6 x 10               | <b>PALLET CUBE:</b> 53.45 ft <sup>3</sup> |
| <b>PACK:</b> 16 oz                      | <b>TRAY:</b> 7.62" x 5.71" x 2.00" | <b>GTIN:</b> 10738985223998               |

## 22398 *New!* Chicken Meatloaf

- ✓ Labor saving, great shelf life and easy to maintain shelf space
- ✓ Easy to merchandise, meal solution
- ✓ First to market "better for you" chicken meatloaf



### COOKING INSTRUCTIONS

This product must be cooked to an internal temperature of 165°F as measured by the use of a meat thermometer. Cooking times may vary.

**Bake:** Preheat oven to 350°F. Place meatloaf on a rimmed baking sheet and bake for approximately 30-35 minutes.

**Airfry:** Preheat Airfryer to 335°F. Lightly spray air fryer basket or trays with cooking spray or line with parchment paper for easier clean up. Add meatloaf to basket. Cook for approximately 25-30 minutes. If adding glaze, brush surface evenly after 18 minutes of cooking.



### Nutrition Facts

Serving Size 4oz (112g)  
Servings Per Container 4

| Amount Per Serving                        |       |                       |
|---|-------|-----------------------|
| <b>Calories</b>                           | 140   | Calories from Fat 45  |
|   |       | <b>% Daily Value*</b> |
| <b>Total Fat</b>                          | 5g    | 8%                    |
| <b>Saturated Fat</b>                      | 1.5g  | 8%                    |
| <b>Trans Fat</b>                          | 0g    |                       |
| <b>Cholesterol</b>                        | 110mg | 37%                   |
| <b>Sodium</b>                             | 520mg | 22%                   |
| <b>Potassium</b>                          | 350mg | 10%                   |
| <b>Total Carbohydrate</b>                 | 6g    | 2%                    |
| <b>Dietary Fiber</b>                      | 0g    | 0%                    |
| <b>Sugars</b>                             | 1g    |                       |
| <b>Protein</b>                            | 18g   |                       |
| <b>Vitamin A</b> 2% • <b>Vitamin C</b> 6% |       |                       |
| <b>Calcium</b> 2% • <b>Iron</b> 4%        |       |                       |

\*Percent Daily Values are based on a 2,000 calorie diet.

**INGREDIENTS:**

Chicken Dark Meat, Water, Bread Crumbs (Wheat Flour, Cane Sugar, Yeast, Sea Salt), Onion Puree, Dried Whole Eggs, Tomato Powder, Vinegar, Parsley, Garlic Puree, Dry Whole Milk, Sea Salt, Black Pepper.

**ALLERGENS:** Wheat, Milk, Eggs

### PRODUCT SPECS - Meatloaf

|   |                                    |   |
|---|------------------------------------|---|
| <b>SHELF LIFE:</b> 18 Days              | <b>CASE PACK:</b> 12 Trays         | <b>CASE:</b> 19.25" x 14.875" x 4.875"    |
| <b>CODE DATE:</b> Use or Freeze By Date | <b>TI HI:</b> 6 x 10               | <b>PALLET CUBE:</b> 53.45 ft <sup>3</sup> |
| <b>PACK:</b> 16 oz                      | <b>TRAY:</b> 7.62" x 5.71" x 2.00" | <b>GTIN:</b> 10738985223981               |

# Chicken Breast Cubes

## 22397 Boneless Skinless Breast Cubes

- ✓ Drive sales with endless meal solutions
- ✓ Cross merchandise to drive basket and item count
- ✓ Ready to season and cook right out of the package

- Kabobs
- One Pot meals
- Chicken Bites
- Casseroles
- Stir Fry
- **And More!**

Our Boneless Skinless Chicken Breast meat cut into cubes ready to skewer and grill. Marinate or season right in the tray.

*Marinate. Skewer. Grill. Enjoy!*



### Nutrition Facts

Serving Size 4oz. (112g)  
Servings Per Container 4

| Amount Per Serving        |       | % Daily Value*       |
|---------------------------|-------|----------------------|
| <b>Calories</b>           | 120   | Calories from Fat 10 |
| <b>Total Fat</b>          | 1.5g  | 2%                   |
| Saturated Fat             | 0g    | 0%                   |
| Trans Fat                 | 0g    |                      |
| <b>Cholesterol</b>        | 75mg  | 25%                  |
| <b>Sodium</b>             | 70mg  | 3%                   |
| <b>Potassium</b>          | 340mg | 10%                  |
| <b>Total Carbohydrate</b> | 0g    | 0%                   |
| Dietary Fiber             | 0g    | 0%                   |
| Sugars                    | 0g    |                      |
| <b>Protein</b>            | 27g   |                      |
| Vitamin A                 | 0%    | Vitamin C 0%         |
| Calcium                   | 8%    | Iron 2%              |

\*Percent Daily Values are based on a 2,000 calorie diet.

**INGREDIENTS:** Chicken



### PRODUCT SPECS - Cubed Chicken

|   |                                    |   |
|---|------------------------------------|---|
| <b>SHELF LIFE:</b> 14 Days              | <b>CASE PACK:</b> 12 Trays         | <b>CASE:</b> 19.25" x 14.875" x 4.875"    |
| <b>CODE DATE:</b> Use or Freeze By Date | <b>TI HI:</b> 6 x 10               | <b>PALLET CUBE:</b> 53.45 ft <sup>3</sup> |
| <b>PACK:</b> 16 oz                      | <b>TRAY:</b> 7.62" x 5.71" x 2.00" | <b>GTIN:</b> 10738985223974               |

# Organic Chicken Bone Broth

## 20190 Organic Chicken Bone Broth

### Our Chicken Bone Broth is Different. How?



Our Chicken Bone Broth can be found with our fresh chicken, in the refrigerated section. There is no added junk in our broth making it a preference in the industry. Just *The Excellent Chicken* you know and love, now in broth.

- Soups
- Casseroles
- Noodle Bowls
- One Pot Dinners
- Pet Foods
- Diet Friendly
- Drink It Straight
- Rice Dishes
- And More!

### Ingredients

Our Chicken Bone Broth is made from 2 ingredients; Organic Chicken Bones and Water.

### Zero Salt

Zero salt or spices added, just pure chicken bone broth for maximum versatility.

### Slow Simmered

Slow simmered for 16 Hours to extract a heartier, richer and superior flavor.

### Unique

Our refrigerated bone broth is naturally thick and gelatinous due to the levels of collagen and protein.

**19g**  
PROTEIN

**10g**  
COLLAGEN

**4g**  
FAT

**NO ADDED SALT**

### Nutrition Facts

About 3 servings per container  
Serving size 1 Cup (240ml) (240g)

| Calories                  | Per Serving | Per Container |
|---------------------------|-------------|---------------|
|                           | <b>110</b>  | <b>330</b>    |
|                           | %DV*        | %DV*          |
| <b>Total Fat</b>          | 4g          | 12g           |
| Saturated Fat             | 1g          | 3.5g          |
| Trans Fat                 | 0g          | 0g            |
| <b>Cholesterol</b>        | 5mg         | 15mg          |
| <b>Sodium</b>             | 260mg       | 780mg         |
| <b>Total Carbohydrate</b> | 0g          | 0g            |
| Dietary Fiber             | 0g          | 0g            |
| Total Sugars              | 0g          | 0g            |
| Includes Added Sugars     | 0g          | 0g            |
| <b>Protein</b>            | 19g         | 56g           |
| Vitamin D                 | 0mcg        | 0mcg          |
| Calcium                   | 7mg         | 21mg          |
| Iron                      | 0mg         | 0mg           |
| Potassium                 | 482mg       | 1425mg        |

\*The % Daily Value (DV) tells you how much a nutrient in a serving of food contributes to a daily diet. 2,000 calories a day is used for general nutrition advice.

### PRODUCT SPECS - Broth

|   |  |                                   |
|---|--|-----------------------------------|
| <b>SHELF LIFE:</b> 70 Days              | <b>JAR DIMENSIONS:</b> 3.4" x 3.4 x 5.2" | <b>CASE WEIGHT:</b> 18 lbs        |
| <b>CODE DATE:</b> Use or Freeze By Date | <b>CASE PACK:</b> 12 Jars                | <b>CASE:</b> 15" x 11.25" x 6.25" |
| <b>JAR WEIGHT:</b> 24 oz                | <b>TI HI:</b> 10 x 7                     |                                   |





# Whole Bird

## Whole Chicken

The whole bird offers a variety of cuts and endless recipe options. A complete scaled edge, and EZ open feature keep your cases clean.

\* Some birds may be missing giblets.



**22000**  
RWA Whole Chicken  
GTIN: 90738985220009



**22010**  
Organic Whole Chicken  
GTIN: 90738985220108



How to Cut Up  
A Whole Bird  
**Scan to Watch**

### PRODUCT SPECS - Whole Bird

|   |   |   |
|---|---|---|
| <b>SHELF LIFE:</b> 16 Days              | <b>PACK:</b> 6 Birds  | <b>PALLET CUBE:</b> 66.78 ft <sup>3</sup> |
| <b>CODE DATE:</b> Use or Freeze By Date | <b>TI HI:</b> 6 x 10  | <b>TARE:</b> 0.031 lbs / 0.5 oz           |
| <b>AVERAGE BIRD WEIGHT:</b> 3.5-4.5 lbs | <b>CASE:</b> 23.13" x 13.13" x 5.5" (0.97 ft <sup>3</sup> ) |   |

# Specialty Cuts

## Specialty Cut Chicken



## Product Offerings

- 22091 Bone-In Skinless Breasts
- 22092 Bone-In Skinless Drumsticks
- 22093 Bone-In Skinless Legs
- 22094 Bone-In Skinless Thighs\*\*
- 22157 Boneless Skin-On Whole Leg
- 22354 Boneless Skin-On Breasts
- 22355 Boneless Skin-On Thighs
- 22297 Chicken Half\*
- 22345 Lollipop Chicken Drumsticks

\*Pack: 10 Trays

\*\*Shelf Life: 14 Days

### PRODUCT SPECS - Standard Trays

|   |                                    |   |
|---|------------------------------------|---|
| <b>SHELF LIFE:</b> 18 Days              | <b>PACK:</b> 12 Trays              | <b>CASE:</b> 17.31" x 9.81" x 9.94" (0.98 ft <sup>3</sup> ) |
| <b>CODE DATE:</b> Use or Freeze By Date | <b>TI HI:</b> 10 x 7               | <b>PALLET CUBE:</b> 82.96 ft <sup>3</sup>                   |
| <b>AVERAGE TRAY WEIGHT:</b> 1.5-2 lbs   | <b>TRAY:</b> 9.19" x 8.35" x 1.77" | <b>TARE:</b> 0.13 lb / 2.1 oz                               |



### What is 8 Piece Cut?

A whole bird already cut up!  
Contains: 2 Drumsticks, 2 Thighs, 2 Split Breasts, 2 Wings

**22042**  
8 Piece Cut Chicken  
GTIN: 90738985220429



### What is Spatchcock?

A whole bird with the back-bone removed so it can lay flat for grilling and sheet pan meals.

**22104**  
Spatchcock Cut Chicken\*  
GTIN: 90738985221044

\*Pack: 6 Trays

### PRODUCT SPECS - Family Pack

|   |   |  |
|---|---|--|
| <b>SHELF LIFE:</b> 18 Days              | <b>PACK:</b> 8 Trays- 8 Piece / 6 Trays- Spatchcock | <b>CASE:</b> 23.19" x 13.19" x 7.56" (1.34 ft <sup>3</sup> ) |
| <b>CODE DATE:</b> Use or Freeze By Date | <b>TI HI:</b> 6 x 9                                 | <b>PALLET CUBE:</b> 81.29 ft <sup>3</sup>                    |
| <b>AVERAGE TRAY WEIGHT:</b> 3.5 lbs     | <b>TRAY:</b> 12.58" x 11.14" x 2.24"                | <b>TARE:</b> 0.219 lbs / 3.5 oz                              |

## Family Pack



## Product Offerings

- 22045 Whole Chicken Legs
- 22046 Boneless, Skin-On Thigh\*\*
- 22047 Boneless, Skinless Chicken Breasts
- 22048 Boneless, Skinless Chicken Thighs
- 22049 Cut Chicken Wings
- 22050 Chicken Drumsticks
- 22067 Split Breast Chicken\*
- 22068 Chicken Thighs
- 22042 8 Piece Cut
- 22104 Spatchcock Cut\*

\*Pack: 6 Trays

\*\*Shelf Life: 14 Days

### PRODUCT SPECS - Family Pack

|   |                                      |  |
|---|--------------------------------------|--|
| <b>SHELF LIFE:</b> 18 Days              | <b>PACK:</b> 8 Trays                 | <b>CASE:</b> 23.19" x 13.19" x 7.56" (1.34 ft <sup>3</sup> ) |
| <b>CODE DATE:</b> Use or Freeze By Date | <b>TI HI:</b> 6 x 9                  | <b>PALLET CUBE:</b> 81.29 ft <sup>3</sup>                    |
| <b>AVERAGE TRAY WEIGHT:</b> 3.5 lbs     | <b>TRAY:</b> 12.58" x 11.14" x 2.24" | <b>TARE:</b> 0.219 lbs / 3.5 oz                              |

# Ground Chicken

## 22400 FAMILY PACK *New!* Ground Chicken

- ✓ No preservatives, extracts or oils to extend shelf life
- ✓ Superior convenience, use one at a time or all 3!
- ✓ Clean label, 100% Chicken

- Soups
- Tacos
- Smashburgers
- One Pot Dinners
- Lettuce Wraps
- Empanadas
- Dips & Appetizers
- Chili
- **And More!**



### PRODUCT SPECS - Family Pack Ground

|   |                                     |  |
|---|-------------------------------------|--|
| <b>SHELF LIFE:</b> 14 Days              | <b>CASE PACK:</b> 6-3 lb Units      | <b>CASE:</b> 19.250" x 14.875" x 7.375"    |
| <b>CODE DATE:</b> Use or Freeze By Date | <b>TI HI:</b> 6 x 9                 | <b>PALLET CUBE:</b> 70.965 ft <sup>3</sup> |
| <b>PACK:</b> 3-16 oz Trays (3 lbs)      | <b>TRAY:</b> 17.81" x 7.62" x 2.00" | <b>GTIN:</b> 10738985224001                |



**22070**

100% Breast Meat  
Ground Chicken  
GTIN: 10738985220706




**22076**

100% Leg Meat  
Ground Chicken  
GTIN: 10738985220768



**22163**

 Organic Ground  
Chicken  
GTIN: 10738985221635



### PRODUCT SPECS - Ground

|   |                                 |  |
|---|---------------------------------|--|
| <b>SHELF LIFE:</b> 14 Days              | <b>PACK:</b> 12 Trays           | <b>CASE:</b> 19.25" x 14.875" x 4.875"   |
| <b>CODE DATE:</b> Use or Freeze By Date | <b>TI HI:</b> 6 x 10            | <b>PALLET CUBE:</b> 53.45ft <sup>3</sup> |
| <b>TRAY WEIGHT:</b> 16 oz               | <b>TRAY:</b> 7.62" x 5.71" x 2" |  |

# Livers, Gizzards, Hearts



**22052**

18oz Organic  
Chicken Livers  
GTIN: 10738985220522



**22078**

16oz Organic  
Chicken Hearts  
GTIN: 10738985220782



**22077**

16oz Organic  
Chicken Gizzards  
GTIN: 10738985220775



**22051**

18oz Chicken  
Livers  
GTIN: 10738985220515



**22121**

16oz Chicken  
Hearts  
GTIN: 10738985221215



**22120**

16oz Chicken  
Gizzards  
GTIN: 10738985221208



### PRODUCT SPECS - Giblets

|  |                            |  |
|--|----------------------------|--|
| <b>SHELF LIFE:</b> 14 Days                                 | <b>PACK:</b> 12 Jars       | <b>CASE:</b> 15.56" x 11.31" x 4.5" (0.46ft <sup>3</sup> ) |
| <b>CODE DATE:</b> Use or Freeze By Date                    | <b>TI HI:</b> 9 x 9        | <b>PALLET CUBE:</b> 50.56ft <sup>3</sup>                   |
| <b>JAR WEIGHT:</b> Hearts & Gizzards -16oz / Livers - 18oz | <b>JAR:</b> 3.625" x 4.25" |  |

## Single Serve Program



**22347**

Organic Boneless Skinless Chicken Breast



**22349**

Organic Boneless Skinless Chicken Thighs



Bell & Evans is excited to present our **SINGLE SERVE CHICKEN PROGRAM** to address the consumer need for premium cut chicken parts in a convenient single serve portioned package.

Each package is scaled to a net weight of 8oz and the packaging is designed with a UPC scan code on the back of each tray.

### Key Packaging Points

- BPA Free
- No Leaks
- Freezer Safe
- #1 PETE Recyclable Tray
- Marinate-in-tray technology
- Vacuum Sealed for Freshness



**22346**

Boneless Skinless Chicken Breast



**22348**

Boneless Skinless Chicken Thighs



**22350**

Boneless Skin-On Chicken Breast



**22351**

Boneless Skin-On Chicken Thighs



### PRODUCT SPECS - Single Serve

|   |                                 |  |
|---|---------------------------------|--|
| <b>SHELF LIFE:</b> 18 Days              | <b>PACK:</b> 16 Trays           | <b>CASE:</b> 17.31" x 9.81" x 7.00" (0.67ft <sup>3</sup> ) |
| <b>CODE DATE:</b> Use or Freeze By Date | <b>TI HI:</b> 10 x 9            | <b>PALLET CUBE:</b> 68.617 ft <sup>3</sup>                 |
| <b>TRAY WEIGHT:</b> 8 oz                | <b>TRAY:</b> 8.3" x 4.4" x 1.5" |  |

## Fresh Freeze

### What is Fresh Freeze?

Our Fresh Freeze program takes our same premium fresh chicken you see in our standard traypacks but instantly freezes them for ultimate freshness. So the only difference is, it's frozen!

The fresh chicken is frozen within 24 hours of production to maintain its natural juices.

Available in both *RWA* and *Organic*.



**FRESH FREEZE**

**RWA FRESH FREEZE**

|       |                                |
|-------|--------------------------------|
| 22150 | ORG Whole Bird*                |
| 22145 | ORG Boneless, Skinless Thighs  |
| 22146 | ORG Cut Wings                  |
| 22147 | ORG Drumsticks                 |
| 22148 | ORG Split Breast**             |
| 22149 | ORG Thighs                     |
| 22151 | ORG Whole Legs                 |
| 22675 | ORG Boneless, Skinless Breasts |

|       |                            |
|-------|----------------------------|
| 22152 | Whole Bird*                |
| 22165 | Boneless, Skin-On Legs     |
| 22242 | Boneless, Skinless Breasts |
| 22243 | Boneless, Skinless Thighs  |
| 22244 | Cut Wings                  |
| 22245 | Drumsticks                 |
| 22246 | Split Breast**             |
| 22247 | Thighs                     |
| 22248 | Whole Legs                 |

\*Specs Vary. See Whole Chicken for Specs  
\*\*Pack: 10 Trays

Need more information on Fresh Freeze? Contact your account manager for questions.

### PRODUCT SPECS - Fresh Freeze

|                                       |                                    |   |
|---------------------------------------|------------------------------------|---|
| <b>SHELF LIFE:</b> Frozen - 12 months | <b>PACK:</b> 12 Trays              | <b>CASE:</b> 17.31" x 9.81" x 9.94" (0.98 ft <sup>3</sup> ) |
| <b>CODE DATE:</b> Best By Date        | <b>TI HI:</b> 10 x 4***            | <b>PALLET CUBE:</b> 49.83 ft <sup>3</sup>                   |
| <b>AVERAGE TRAY WEIGHT:</b> 1.5-2 lbs | <b>TRAY:</b> 9.19" x 8.35" x 1.77" | <b>TARE:</b> 0.13 lb / 2.1 oz                               |

\*\*\*May Vary

# Chicken Franks



| Nutrition Facts                  |                |
|----------------------------------|----------------|
| Serving Size 1 Frank (65g)       |                |
| Servings Per Container 6         |                |
| Amount Per Serving               |                |
| Calories 80 Calories from Fat 35 |                |
|                                  | % Daily Value* |
| Total Fat 4g                     | 6%             |
| Saturated Fat 1g                 | 5%             |
| Trans Fat 0g                     |                |
| Cholesterol 10mg                 | 3%             |
| Sodium 540mg                     | 23%            |
| Potassium 250mg                  | 7%             |
| Total Carbohydrate 2g            | 1%             |
| Dietary Fiber 0g                 | 0%             |
| Sugars 1g                        |                |
| Protein 10g                      |                |
| Vitamin A 2%                     | Vitamin C 2%   |
| Calcium 0%                       | Iron 2%        |



## 20641 Chicken Franks

Our Chicken Franks are meant for the whole family!  
The perfect blend for a perfect cookout.

### INGREDIENTS:

Chicken, Chicken Broth, Sea Salt, Cane Sugar, Vinegar, Fruit and Spice Extracts, Cultured Celery Powder, Spices, Paprika/Paprika Extract, Garlic Powder.



Our Chicken Franks are a great healthy alternative for kids, including this fun recipe; **Cornbread Stuffed Muffins!**

### PRODUCT SPECS - Franks

**SHELF LIFE:** 70 Days

**PACK WEIGHT:** 13.75 oz

**PACK PER CASE:** 12

**CODE DATE:** Use or Freeze By Date

**PACK:** 6.5" x 8.5"

**CASE WEIGHT:** 10.3125 lbs

**PACK SIZE:** 6 Franks

**CASE:** 12" x 9.1" x 6.4"

**GTIN:** 10738985206410



*other*  
**POULTRY**



## Featured Item— 20169 Premium Cornish Hen

Available in 20oz Frozen 20171

### Small Size

The first and most notable difference is the size of Cornish Hens, which are generally around 18-24oz. Cornish Hens are easily split in half – either before or after cooking due to their soft bones.

### Texture

Cornish Hens are butchered younger, which tends to make their meat more tender than broilers when cooked.

### Nutrition

Cornish Hens' adolescence also contributes to a lower fat content. Since they are comprised of primarily white meat, Cornish Hens are very lean and rich in niacin, which can help lower cholesterol and boost brain function.

### What are Cornish Hens?

Cornish Hens are a specific breed that grow fast and require less feed to reach maturity than most breeds. Cornish Hens develop particularly large breasts and fatty skin. The small meat to bone ratio makes it the perfect serving size for a premium dish.

### Why Cornish Hens?

Quick and easy to prepare, our Cornish Hens are delectable and flavorful. Because this is not a typical chicken item you find at your local grocery store, this item is considered a luxury to most.

### BENEFITS—

- Unique Taste
- Portion Size
- Tenderness
- Flavor
- Fast Cook Time
- Luxury

### PRODUCT SPECS - Cornish Hen

|   |                               |                                    |
|---|-------------------------------|------------------------------------|
| <b>SHELF LIFE:</b> 10 Days              | <b>PACK:</b> 12 Birds         | <b>GTIN FRESH:</b> 10738985201699  |
| <b>CODE DATE:</b> Use or Freeze By Date | <b>TI HI:</b> 7 x 8           | <b>GTIN FROZEN:</b> 10738985201712 |
| <b>AVERAGE WEIGHT:</b> 18-24 oz         | <b>CASE:</b> 13.5" x 8" x 14" |                                    |



## 20173 Fresh Whole Duck

Available in Frozen 20174

### PRODUCT SPECS - Whole Duck

|                                   |                                 |  |
|-----------------------------------|---------------------------------|--|
| <b>SHELF LIFE:</b> 14 Days        | <b>PACK:</b> 6 Birds            | <b>CASE CUBE:</b> 1.43 ft <sup>3</sup> |
| <b>CODE DATE:</b> Printed On Pack | <b>TI HI:</b> 5 x 10            | <b>GTIN FRESH:</b> 90738985201732      |
| <b>AVERAGE WEIGHT:</b> 6-6.5 lbs  | <b>CASE:</b> 14" x 23.5" x 7.5" | <b>GTIN FROZEN:</b> 90738985201749     |

### Fresh Duck Parts

We've partnered with a 4th generation Pennsylvania based duck producer for the tastiest duck around. Our Pekin Duck are descendants of the original "Long Island Duck", known for their full flavor and natural moisture.



**22099**

Boneless Skin-On  
Duck Breast  
GTIN: 90738985220993



**22100**

Whole Duck  
Legs  
GTIN: 90738985221006

### PRODUCT SPECS - Standard Trays

|   |                                    |   |
|---|------------------------------------|---|
| <b>SHELF LIFE:</b> 18 Days              | <b>PACK:</b> 12 Trays              | <b>CASE:</b> 17.31" x 9.81" x 9.94" (0.98 ft <sup>3</sup> ) |
| <b>CODE DATE:</b> Use or Freeze By Date | <b>TI HI:</b> 10 x 7               | <b>PALLET CUBE:</b> 82.96 ft <sup>3</sup>                   |
| <b>AVERAGE TRAY WEIGHT:</b> 1.5-2 lbs   | <b>TRAY:</b> 9.19" x 8.35" x 1.77" | <b>TARE:</b> 0.13 lb / 2.1 oz                               |

# Turkeys

## Turkey

**Bell & Evans Turkeys** are bred, raised and processed in **Pennsylvania Dutch Country**. With a complete line of Raised Without Antibiotics, Organic, and Brined Whole Turkeys, they are sure to be centerstage for your customers' Holiday feasts!



*Bone-In Turkey Breast also available!*

- ✓ **20% More Meat**
- ✓ **55% Less Fat**
- ✓ **25% Fewer Calories**



|                | WEIGHT RANGE            | HEAD PER CASE | HEAD PER PALLET | BOXES PER PALLET | Ti x Hi | CASE DIMENSIONS        |
|----------------|-------------------------|---------------|-----------------|------------------|---------|------------------------|
| <b>BE RWA</b>  | 6/8, 8/10, 10/12, 12/14 | 4             | 160             | 40               | 4 x 10  | 23.75" x 19.5" x 8"    |
|                | 14/16                   | 4             | 128             | 32               | 4 x 8   | 23.63" x 19.38" x 9.5" |
|                | 16/18-18/20             | 2             | 108             | 54               | 6 x 9   | 20.75" x 15.5" x 8.25" |
|                | 20/22-26/28             | 2             | 80              | 40               | 5 x 8   | 22.5" x 16" x 9.25"    |
|                | 28/30-38/40+            | 1             | 56              | 56               | 7 x 8   | 18.25" x 13" x 10"     |
| <b>BRINED</b>  | 6/10-10/14              | 4             | 160             | 40               | 4 x 10  | 23.75" x 19.5" x 8"    |
|                | 14/18                   | 4             | 128             | 32               | 4 x 8   | 23.63" x 19.38" x 9.5" |
|                | 18/22-26/28             | 2             | 80              | 40               | 5 x 8   | 22.5" x 16" x 9.25"    |
|                | 28/30                   | 1             | 56              | 56               | 7 x 8   | 18.25" x 13" x 10"     |
| <b>ORGANIC</b> | 6/10-10/14              | 4             | 160             | 40               | 4 x 10  | 23.75" x 19.5" x 8"    |
|                | 14/18                   | 4             | 128             | 32               | 4 x 8   | 23.63" x 19.38" x 9.5" |
|                | 18/22-26/28             | 2             | 80              | 40               | 5 x 8   | 22.5" x 16" x 9.25"    |
|                | 28/30-32/34+            | 1             | 56              | 56               | 7 x 8   | 18.25" x 13" x 10"     |
| <b>BREAST</b>  | 4/8                     | 6             | 324             | 54               | 6 x 9   | 20.75" x 15.5" x 8.25" |
|                | 8/10                    | 4             | 216             | 54               | 6 x 9   | 20.75" x 15.5" x 8.25" |
|                | 10/12                   | 4             | 160             | 40               | 5 x 8   | 22.5" x 16" x 9.25"    |
|                | 12/14                   | 4             | 128             | 32               | 4 x 8   | 23.63" x 19.38" x 9.5" |
|                | 14/16                   | 2             | 128             | 32               | 4 x 8   | 23.63" x 19.38" x 9.5" |



# Bulk Pack

# Bulk Pack

|  |  | ITEM # | PACK   |
|--|--|--------|--------|
|  | RWA Boneless, Skinless Whole Breast        | 20074  | 4x10lb |
|  | RWA Boneless, Skinless Breast              | 20075  | 4x10lb |
|  | RWA Boneless, Skinless Breast              | 22343  | 4x5lb  |
|  | Organic Boneless, Skinless Whole Breast    | 20073  | 4x10lb |
|  | Organic Boneless, Skinless Breast          | 22299  | 4x10lb |
|  | RWA 4oz Boneless, Skinless Breasts         | 20092  | 4x5lb  |
|  | RWA 6oz Boneless, Skinless Breasts         | 20454  | 4x5lb  |
|  | RWA Thin Sliced, Boneless, Skinless Breast | 22142  | 4x5lb  |
|  | RWA BS Breast Thin Trim                    | 22131  | 4x10lb |
|  | RWA BS Breast w/ Trim/Pieces               | 20078  | 4x10lb |
|  | RWA BS Breast Strips                       | 20426  | 40lb   |
|  | RWA Boneless, Skin-On Breast 8 - 10oz      | 22171  | 4x5lb  |
|  | RWA Boneless, Skin-On Breast 5.5-6.5oz     | 22219  | 4x5lb  |
|  | RWA Whole Breast                           | 20061  | 40lb   |
|  | RWA Boneless, Skin-On Whole Breast         | 20071  | 4x10lb |
|  | RWA Split Breast                           | 20062  | 40lb   |
|  | RWA Split Breast                           | 22322  | 4x8lb  |
|  | RWA Split Breast                           | 22372  | 2x10lb |
|  | Organic Split Breast                       | 20064  | 40lb   |

|  |                                  | ITEM # | PACK   |
|--|----------------------------------|--------|--------|
|  | RWA Whole Breast With Wing Joint | 20065  | 40lb   |
|  | RWA 8 - 10oz Airline Breast      | 22143  | 4x5lb  |
|  | RWA 10 - 12oz Airline Breast     | 22144  | 4x5lb  |
|  | RWA Tenders                      | 22314  | 4x10lb |
|  | RWA Tenders                      | 20081  | 4x5lb  |
|  | RWA Whole Wings                  | 20094  | 40lb   |
|  | Organic Whole Wings              | 20095  | 40lb   |
|  | RWA Cut Wings                    | 20097  | 40lb   |
|  | RWA Cut Wings                    | 22323  | 4x10lb |
|  | RWA Cut Wings                    | 22373  | 2x10lb |
|  | Organic Cut Wings                | 20096  | 40lb   |
|  | RWA Drumsticks                   | 20048  | 40lb   |
|  | RWA Drumsticks                   | 22320  | 4x10lb |
|  | RWA Drumsticks                   | 22370  | 2x10lb |
|  | Organic Drumsticks               | 20049  | 40lb   |
|  | RWA Lollipop Chicken Drumsticks  | 22318  | 4x10lb |
|  | RWA Lollipop Chicken Drumsticks  | 22368  | 2x10lb |

# Bulk Pack

# Bulk Pack

|  |  | ITEM #       | PACK          |
|--|--|--------------|---------------|
|    | RWA Whole Legs   | 20043        | 40lb          |
|  | RWA Whole Legs   | 22319        | 4x9lb         |
|  | RWA Whole Legs   | 22369        | 2x10lb        |
|  | <b>Organic Whole Legs</b>  | <b>20045</b> | <b>40lb</b>   |
|    | RWA Boneless, Skinless Whole Legs  | 20630        | 4x10lb        |
|  | RWA Boneless, Skin-On Whole Legs   | 22169        | 4x5lb         |
|    | RWA Thighs   | 20051        | 40lb          |
|  | RWA Thighs   | 22321        | 4x10lb        |
|  | RWA Thighs   | 22371        | 2x10lb        |
|  | <b>Organic Thighs</b>  | <b>20455</b> | <b>40lb</b>   |
|   | RWA Boneless Skin-On Thigh   | 22214        | 4x10lb        |
|  |  |              |               |
|  | RWA Boneless, Skinless Thighs  | 20053        | 40lb          |
|  | RWA Boneless, Skinless Thighs  | 22344        | 4x10lb        |
|  | RWA Boneless, Skinless Thighs  | 22129        | 4x5lb         |
|  | <b>Organic Boneless Skinless Thighs</b>  | <b>20695</b> | <b>4x10lb</b> |
|  | <b>Organic Boneless Skinless Thighs</b>  | <b>20052</b> | <b>4x5lb</b>  |
|  | RWA Chicken Oysters  | 22293        | 4x5lb         |
|  | <i>Chicken Oysters are two circular-shaped, small pieces of dark meat on the back of the chicken's thigh, near the backbone.</i> |              |               |
|  | RWA 8-Piece Cut WOG 3 - 3.5lb  | 20040        | 12 Birds      |
|  | RWA 8-Piece Cut WOG 3.5 - 4lb  | 20486        | 12 Birds      |
|  | <i>8 Piece Cut Includes: 2 Wings, 2 Split Breasts, 2 Thighs and 2 Drumsticks</i>   |              |               |

|   |  | ITEM #                       | PACK                               |
|---|--|------------------------------|------------------------------------|
|    | RWA Spatchcock Cut Chicken   | 20028                        | 4x10lb                             |
|   | <i>Whole chicken with the backbone removed</i>   |                              |                                    |
|    | RWA Semi Boneless Whole Bird With Wing Joint   | 22172                        | 4x5lb                              |
|   | <i>Whole chickens fully deboned, except for the drumette wing joints</i>                     |                              |                                    |
|    | RWA Whole Broiler 3 - 3.5lb (Bulk)   | 20020                        | 10 Birds                           |
|   | RWA Whole Broiler 3.5 - 4.5lb (Bulk)   | 20021                        | 10 Birds                           |
|   | RWA Whole Broiler 4.5 - 5.5lb (Bulk)   | 20023                        | 8 Birds                            |
|   | <b>Organic Whole Broiler (Bulk)</b>  | <b>20024</b>                 | <b>10 Birds</b>                    |
|   |  |                              |                                    |
|   | RWA Trussed WOG 3 - 3.5lb (Bulk)   | 20030                        | 10 Birds                           |
|   | RWA Trussed WOG 3.5 - 4lb (Bulk)   | 20716                        | 10 Birds                           |
|   | <b>Organic Trussed WOG 3 - 3.5lb (Bulk)</b><br><b>Organic Trussed WOG 3.5 - 4.0lb (Bulk)</b> | <b>20431</b><br><b>20715</b> | <b>10 Birds</b><br><b>10 Birds</b> |
|  | RWA WOG Broiler 3 - 3.5lb (Bulk)   | 20033                        | 10 Birds                           |
|   | RWA WOG Broiler 3.5 - 4.5lb (Bulk)   | 20037                        | 10 Birds                           |
|   | RWA WOG Broiler 4.0 - 5.5lb (Bulk)   | 20038                        | 8 Birds                            |
|   | <b>Organic WOG Broiler 3.0 - 3.5lb (Bulk)</b>  | <b>20713</b>                 | <b>10 Birds</b>                    |
|  | RWA Chicken Halves (Bulk)  | 20027                        | 24 Halves                          |
|  | RWA Injected WOG 3.75 - 4.25lb (Bulk)  | 20698                        | 10 Birds                           |
|   | RWA Injected Trussed WOG 3.75 - 4.25lb (Bulk)  | 20682                        | 10 Birds                           |



# Bulk

## Bulk, Bones & More

Bell & Evans bulk items include a variety of fresh cut parts, Whole Chicken items, and even Bones and Giblets.

| BULK                         | ITEM  | GIBLETS           | ITEM  |
|------------------------------|-------|-------------------|-------|
| Backs 40lb                   | 20101 | RWA Livers 4x5lb  | 22122 |
| Necks 40lb                   | 20107 | RWA Gizzards 40lb | 20408 |
| Rib Cages 40lb               | 20102 | RWA Hearts 40lb   | 20416 |
| Skin 40lb                    | 20117 |                   |       |
|                              |       | <b>ORGANIC</b>    |       |
| Coarse Ground Leg Meat 4x5lb | 22132 | ORG Backs         | 20104 |
| RWA Skin 4x5lb               | 20293 | ORG Rib Cages     | 20105 |

### PRODUCT SPECS 4x5lb

|  |
|--|
| <b>SHELF LIFE:</b> 14-18 Days*                               |
| <b>CODE DATE:</b> On Case Label                              |
| <b>TARE WEIGHT:</b> 0.041 lbs                                |
| <b>PACK:</b> 4 Pouches                                       |
| <b>POUCH:</b> 7.75" x 11.5" x 2"                             |
| <b>TI HI:</b> 9 x 9  |
| <b>CASE:</b> 15.63" x 11.56" x 4.56" (0.48 ft <sup>3</sup> ) |
| <b>PALLET CUBE:</b> 54.44 ft <sup>3</sup>                    |

\*Varies by Product

### PRODUCT SPECS 4x10lb

|   |
|---|
| <b>SHELF LIFE:</b> 14-18 Days*                              |
| <b>CODE DATE:</b> On Case Label                             |
| <b>TARE WEIGHT:</b> 0.05 lbs                                |
| <b>PACK:</b> 4 Pouches                                      |
| <b>TI HI:</b> 6 x 7   |
| <b>CASE:</b> 23.13" x 13.13" x 5.5" (0.97 ft <sup>3</sup> ) |
| <b>PALLET CUBE:</b> 48.44 ft <sup>3</sup>                   |

\*Varies by Product

### PRODUCT SPECS 40lb

|   |
|---|
| <b>SHELF LIFE:</b> 14-18 Days*                          |
| <b>CODE DATE:</b> On Case Label                         |
| <b>TI HI:</b> 5 x 8*                                    |
| <b>PACK:</b> 1 Bag                                      |
| <b>CASE:</b> 23.19" x 16" x 6.5" (1.4 ft <sup>3</sup> ) |
| <b>PALLET CUBE:</b> 63.33 ft <sup>3</sup>               |
| <b>AVG CASE WEIGHT:</b> 40 lbs                          |

\*Varies by Product

### 100% Bird Utilization

Bell & Evans makes the most of all parts of the chicken. Bones are a great source for broths, stocks and soups while other parts may go to our Rendering Facility. This facility takes in feathers, bones, blood and more to process items like Chicken By-Product Meal for Pet Food products.

**Did You Know?** Bell & Evans owns the World's First Organic Certified Rendering Facility located right next to our Harvesting facility.

### Is Bell & Evans chicken injected with anything?

#### **NO, Our Chicken Is:**

- 100% Air Chilled
- Only Natural Juices
- Has No MSG
- Has No Nitrates or Nitrites
- Has No Phosphates or Phosphorous
- All Natural

*When we claim 100% Air Chilled, that means EVERYTHING, including our Bones and Giblets.*



# PREPARED

# Value Added Products

Bell & Evans delivers extra value by *expertly trimming, x-ray bone detection, nitrogen freezing* and more to truly offer *superior quality prepared products*.



### Bone Detection

100% of our boneless product passes through x-ray bone detection designed for the fish industry to detect very small bones.



### Organic Soybean Oil

Our breaded products are flash-fried in our own organic soybean oil from U.S. grown expeller-pressed organic soybeans harvested for our organic chicken feed. No shortcuts with toxic hexane processing or imported grains.



### Nitrogen Frozen

Our prepared products are nitrogen frozen for an instant quick freeze that locks in natural juices and preserves quality.

## Uncooked = Superior Quality

Most of our prepared products are sold uncooked for the best quality. Consumers cook our prepared products for the first time in their kitchen, and the result is a fresher eating experience versus if they were reheating the products. Reheating can result in a dryer, tougher product. Our prepared products resemble homemade.

**For Consumer Convenience:** We do offer an EXCELLENT fully cooked product: Boneless, Skinless Chicken Breast Pieces in a 28 oz. resealable bag.

## What is the marinade for on the frozen breaded items?

We use a simple marinade of water and sea salt for our frozen breaded items. The marinade helps the batter and breading adhere to the chicken, especially since they are whole breast meat chunks – not chopped and formed. It also ensures the food remains moist and juicy through its frozen shelf life.



Watch how our Whole Breast Meat Breaded Chicken Nuggets are made!



### 22230 Breaded Chicken Breast Nuggets

**INGREDIENTS:** Chicken Breast Meat Marinated in Water and Sea Salt. Breaded with Unbleached Wheat Flour, Water, Cane Sugar, Yeast, Sea Salt, Black Pepper, Paprika. Flash Fried in Organic Expeller-Pressed Soybean Oil to set Breading.

**CONTAINS:** Wheat

| Nutrition Facts                                     |                |
|---|----------------|
| Serving Size 4oz (112g)<br>Servings Per Container 3 |                |
| Amount Per Serving                                  |                |
| <b>Calories 200</b> Calories from Fat 80            |                |
|   | % Daily Value* |
| <b>Total Fat</b> 9g                                 | <b>14%</b>     |
| Saturated Fat 1.5g                                  | 8%             |
| Trans Fat 0g  |                |
| <b>Cholesterol</b> 50mg                             | <b>17%</b>     |
| <b>Sodium</b> 360mg                                 | <b>15%</b>     |
| <b>Potassium</b> 320mg                              | <b>9%</b>      |
| <b>Total Carbohydrate</b> 10g                       | <b>3%</b>      |
| Dietary Fiber 0g                                    | 0%             |
| Sugars 2g   |                |
| <b>Protein</b> 21g                                  |                |
| Vitamin A 0%  | Vitamin C 0%   |
| Calcium 0%  | Iron 0%        |



GTIN: 10738985222304



### 22199 Breaded Chicken Breast Tenders

**INGREDIENTS:** Chicken Breast Meat Tenders Marinated in Water and Sea Salt. Breaded with Unbleached Wheat Flour, Water, Cane Sugar, Yeast, Sea Salt, Black Pepper, Paprika. Flash Fried in Organic Expeller-Pressed Soybean Oil to set Breading.

**CONTAINS:** Wheat

| Nutrition Facts                                     |                |
|---|----------------|
| Serving Size 4oz (112g)<br>Servings Per Container 3 |                |
| Amount Per Serving                                  |                |
| <b>Calories 210</b> Calories from Fat 80            |                |
|   | % Daily Value* |
| <b>Total Fat</b> 9g                                 | <b>14%</b>     |
| Saturated Fat 1.5g                                  | 8%             |
| Trans Fat 0g  |                |
| <b>Cholesterol</b> 40mg                             | <b>13%</b>     |
| <b>Sodium</b> 440mg                                 | <b>18%</b>     |
| <b>Potassium</b> 320mg                              | <b>9%</b>      |
| <b>Total Carbohydrate</b> 12g                       | <b>4%</b>      |
| Dietary Fiber 0g                                    | 0%             |
| Sugars 2g   |                |
| <b>Protein</b> 20g                                  |                |
| Vitamin A 0%  | Vitamin C 2%   |
| Calcium 0%  | Iron 0%        |



GTIN: 10738985221994



### 22202 Coconut Breaded Chicken Breast Tenders

**INGREDIENTS:** Chicken Breast Meat Tenders Marinated in Water and Coconut Blend (Cane Sugar, Sea Salt, Natural Rum Flavor, Natural Coconut Flavor, Natural Pineapple Flavor) Breaded in Unbleached Wheat Flour, Water, Coconut, Sea Salt, Cane Sugar, Yeast, Black Pepper, Paprika. Flash Fried in Organic Expeller-Pressed Soybean Oil to set Breading. Contains up to 17% of a Seasoned Solution.

**CONTAINS:** Wheat and Coconut  
Made with unsweetened coconut with NO sulfites.

| Nutrition Facts                                     |                |
|---|----------------|
| Serving Size 4oz (112g)<br>Servings Per Container 3 |                |
| Amount Per Serving                                  |                |
| <b>Calories 200</b> Calories from Fat 70            |                |
|   | % Daily Value* |
| <b>Total Fat</b> 7g                                 | <b>11%</b>     |
| Saturated Fat 2.5g                                  | <b>13%</b>     |
| Trans Fat 0g  |                |
| <b>Cholesterol</b> 40mg                             | <b>13%</b>     |
| <b>Sodium</b> 310mg                                 | <b>13%</b>     |
| <b>Potassium</b> 340mg                              | <b>10%</b>     |
| <b>Total Carbohydrate</b> 14g                       | <b>5%</b>      |
| Dietary Fiber 1g                                    | 4%             |
| Sugars 7g   |                |
| <b>Protein</b> 20g                                  |                |
| Vitamin A 0%  | Vitamin C 0%   |
| Calcium 0%  | Iron 4%        |



GTIN: 10738985222021

## PRODUCT SPECS

**SHELF LIFE:** Frozen - 12 months

**PACK:** 12 - 12 oz

**CASE:** 19.99" x 8.24" x 8.98" (0.86 ft³)

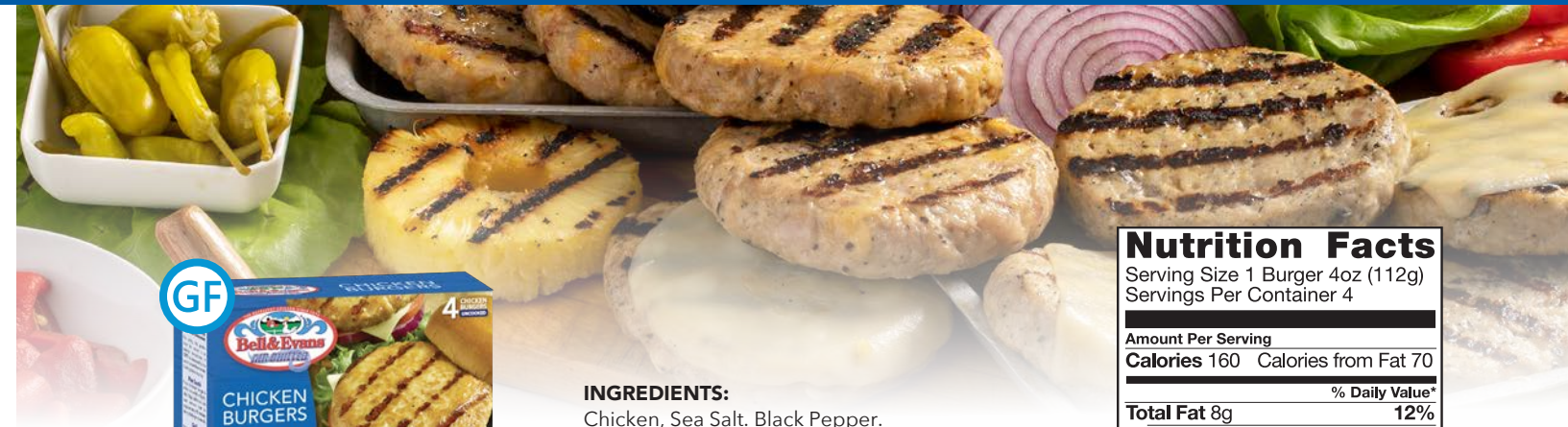
**CODE DATE:** Best By Date On Pack

**TI HI:** 12 x 7

**PALLET CUBE:** 78.02 ft³

**CASE WEIGHT:** 9 lbs

**BOX DIMENSIONS:** 7.13" x 6.25" x 2"



## 22304 Breaded Chicken Patties

**INGREDIENTS:** Chicken, Sea Salt. Breaded with Unbleached Wheat Flour, Water, Cane Sugar, Yeast, Sea Salt, Black Pepper, Paprika. Flash fried in Organic Expeller-Pressed Soybean Oil to set breading.

**CONTAINS** Wheat

### Nutrition Facts

|                                 |                      |
|---------------------------------|----------------------|
| Serving Size 1 Patty 4oz (112g) |                      |
| Servings Per Container 4        |                      |
| Amount Per Serving              |                      |
| <b>Calories</b> 200             | Calories from Fat 90 |
| % Daily Value*                  |                      |
| <b>Total Fat</b> 10g            | <b>15%</b>           |
| Saturated Fat 2g                | 10%                  |
| Trans Fat 0g                    |                      |
| <b>Cholesterol</b> 60mg         | <b>20%</b>           |
| <b>Sodium</b> 280mg             | <b>12%</b>           |
| <b>Potassium</b> 310mg          | <b>9%</b>            |
| <b>Total Carbohydrate</b> 10g   | <b>3%</b>            |
| Dietary Fiber 0g                | 0%                   |
| Sugars 3g                       |                      |
| <b>Protein</b> 19g              |                      |
| Vitamin A 2%                    | Vitamin C 0%         |
| Calcium 0%                      | Iron 8%              |



GTIN: 10738985223042

## 22305 Breaded Chicken Italian Patties

**INGREDIENTS:** Chicken, Mozzarella Cheese (Pasteurized Part-Skim Milk, Cheese Culture, Salt, Enzymes), Garlic Puree, Sea Salt, Black Pepper, Parsley, Basil, Soybean Oil. Breaded with Unbleached Wheat Flour, Water, Parmesan Cheese (Pasteurized Milk, Cheese Cultures, Salt, Enzymes), Sea Salt, Cane Sugar, Dried Yeast, Black Pepper, Paprika. Flash fried in Organic Expeller-Pressed Soybean Oil to set breading.

**CONTAINS:** Milk, Wheat

### Nutrition Facts

|                                 |                       |
|---------------------------------|-----------------------|
| Serving Size 1 Patty 4oz (112g) |                       |
| Servings Per Container 4        |                       |
| Amount Per Serving              |                       |
| <b>Calories</b> 220             | Calories from Fat 100 |
| % Daily Value*                  |                       |
| <b>Total Fat</b> 12g            | <b>18%</b>            |
| Saturated Fat 3.5g              | 18%                   |
| Trans Fat 0g                    |                       |
| <b>Cholesterol</b> 65mg         | <b>22%</b>            |
| <b>Sodium</b> 470mg             | <b>20%</b>            |
| <b>Potassium</b> 270mg          | <b>8%</b>             |
| <b>Total Carbohydrate</b> 9g    | <b>3%</b>             |
| Dietary Fiber 0g                | 0%                    |
| Sugars 2g                       |                       |
| <b>Protein</b> 20g              |                       |
| Vitamin A 2%                    | Vitamin C 0%          |
| Calcium 10%                     | Iron 6%               |



GTIN: 10738985223059

## 22195 Bonless Skinless Breaded Chicken Breasts

**INGREDIENTS:** Chicken Breast Meat Marinated in Water and Sea Salt. Breaded with Unbleached Wheat Flour, Water, Cane Sugar, Yeast, Sea Salt, Black Pepper, Paprika. Flash fried in Organic Expeller-Pressed Soybean Oil to set breading.

**CONTAINS:** Wheat

### Nutrition Facts

|                                    |                      |
|------------------------------------|----------------------|
| Serving Size 1 Filet 5.25oz (149g) |                      |
| Servings Per Container About 2     |                      |
| Amount Per Serving                 |                      |
| <b>Calories</b> 260                | Calories from Fat 80 |
| % Daily Value*                     |                      |
| <b>Total Fat</b> 9g                | <b>14%</b>           |
| Saturated Fat 1.5g                 | 8%                   |
| Trans Fat 0g                       |                      |
| <b>Cholesterol</b> 55mg            | <b>18%</b>           |
| <b>Sodium</b> 520mg                | <b>22%</b>           |
| <b>Potassium</b> 420mg             | <b>12%</b>           |
| <b>Total Carbohydrate</b> 19g      | <b>6%</b>            |
| Dietary Fiber 0g                   | 0%                   |
| Sugars 6g                          |                      |
| <b>Protein</b> 26g                 |                      |
| Vitamin A 0%                       | Vitamin C 4%         |
| Calcium 2%                         | Iron 6%              |



GTIN: 10738985221956



## 22307 Chicken Burgers

**INGREDIENTS:** Chicken, Sea Salt, Black Pepper.

**ALLERGEN FREE**



GTIN: 10738985223073

### Nutrition Facts

|                                  |                      |
|----------------------------------|----------------------|
| Serving Size 1 Burger 4oz (112g) |                      |
| Servings Per Container 4         |                      |
| Amount Per Serving               |                      |
| <b>Calories</b> 160              | Calories from Fat 70 |
| % Daily Value*                   |                      |
| <b>Total Fat</b> 8g              | <b>12%</b>           |
| Saturated Fat 2.5g               | 13%                  |
| Trans Fat 0g                     |                      |
| <b>Cholesterol</b> 90mg          | <b>30%</b>           |
| <b>Sodium</b> 95mg               | <b>4%</b>            |
| <b>Potassium</b> 420mg           | <b>12%</b>           |
| <b>Total Carbohydrate</b> 0g     | <b>0%</b>            |
| Dietary Fiber 0g                 | 0%                   |
| Sugars 0g                        |                      |
| <b>Protein</b> 22g               |                      |
| Vitamin A 4%                     | Vitamin C 2%         |
| Calcium 0%                       | Iron 4%              |

## PRODUCT SPECS - Chicken Burgers

|  |   |  |
|--|---|--|
| <b>SHELF LIFE:</b> Frozen - 12 months  | <b>PACK:</b> 9 - 16 oz Boxes                | <b>CASE:</b> 19.99" x 8.24" x 8.98" (0.86 ft³) |
| <b>CODE DATE:</b> Best By Date On Pack | <b>TI HI:</b> 12 x 7                        | <b>PALLET CUBE:</b> 78.02 ft³                  |
| <b>CASE WEIGHT:</b> 9 lbs              | <b>BOX DIMENSIONS:</b> 7.13" x 6.25" x 2.5" |  |



## 22291

Chicken Bacon & Cheddar  
Chicken Burgers

**INGREDIENTS:** Chicken Leg Meat, Chicken Skin, Cheddar Cheese (Pasteurized Milk, Cheese Culture, Salt, Enzymes, Annatto Color), Chicken Bacon (Chicken Leg Meat, Water, Cane Sugar, Sea Salt, Cultured Celery Powder (Celery Powder, Sea Salt), Rosemary Extract), Seasoning (Sea Salt, Whey, Cane Sugar, Onion Powder, Cheddar Cheese (Milk, Cheese Culture, Salt, Enzymes), Buttermilk Powder, Sour Cream (Cream, Cultures, Lactic Acid), Garlic Powder, Flavor (Maltodextrin, Natural Flavor, Gum Arabic), Yeast Extract, Cultured Nonfat Milk, Buttermilk Solids, Black Pepper, Expeller Pressed Canola Oil, Salt, Citric Acid, Natural Flavor, Lactic Acid, Natural Hickory Smoke Flavor).

**CONTAINS:** Milk



GTIN: 10738985222915

### Nutrition Facts

|                                  |                       |
|----------------------------------|-----------------------|
| Serving Size 1 Burger 6oz (170g) |                       |
| Servings Per Container 2         |                       |
| Amount Per Serving               |                       |
| <b>Calories</b> 390              | Calories from Fat 240 |
| % Daily Value*                   |                       |
| <b>Total Fat</b> 27g             | <b>42%</b>            |
| Saturated Fat 9g                 | 45%                   |
| Trans Fat 0g                     |                       |
| <b>Cholesterol</b> 165mg         | <b>55%</b>            |
| <b>Sodium</b> 1060mg             | <b>44%</b>            |
| <b>Potassium</b> 390mg           | <b>11%</b>            |
| <b>Total Carbohydrate</b> 4g     | <b>1%</b>             |
| Dietary Fiber 0g                 | 0%                    |
| Sugars 3g                        |                       |
| <b>Protein</b> 32g               |                       |
| Vitamin A 4%                     | Vitamin C 4%          |
| Calcium 15%                      | Iron 8%               |

## PRODUCT SPECS - Patties

|  |  |
|--|--|
| <b>SHELF LIFE:</b> Frozen - 12 months  | <b>TI HI:</b> 12 x 7                           |
| <b>CODE DATE:</b> Best By Date On Pack | <b>BOX DIMENSIONS:</b> 7.13" x 6.25" x 2.5"    |
| <b>CASE WEIGHT:</b> 9 lbs              | <b>CASE:</b> 19.99" x 8.24" x 8.98" (0.86 ft³) |
| <b>PACK:</b> 9 - 16 oz Boxes           | <b>PALLET CUBE:</b> 78.02 ft³                  |

## PRODUCT SPECS - Breasts

|  |
|--|
| <b>SHELF LIFE:</b> Frozen - 12 months          |
| <b>CODE DATE:</b> Best By Date On Pack         |
| <b>CASE WEIGHT:</b> 7.88 lbs                   |
| <b>PACK:</b> 12 - 10.5 oz Boxes                |
| <b>TI HI:</b> 12 x 7                           |
| <b>BOX DIMENSIONS:</b> 7.13" x 6.25" x 2"      |
| <b>CASE:</b> 19.99" x 8.24" x 8.98" (0.86 ft³) |
| <b>PALLET CUBE:</b> 78.02 ft³                  |

## PRODUCT SPECS - Bacon Cheddar Chicken Burgers

|  |   |  |
|--|---|--|
| <b>SHELF LIFE:</b> Frozen - 12 months  | <b>PACK:</b> 12 - 12 oz Boxes             | <b>CASE:</b> 19.99" x 8.24" x 8.98" (0.86 ft³) |
| <b>CODE DATE:</b> Best By Date On Pack | <b>TI HI:</b> 12 x 7                      | <b>PALLET CUBE:</b> 78.02 ft³                  |
| <b>CASE WEIGHT:</b> 9 lbs              | <b>BOX DIMENSIONS:</b> 7.13" x 6.25" x 2" |  |

# Meatballs

# Individually Quick Frozen



**22271**  
Chicken Meatballs

**INGREDIENTS:** Chicken Leg Meat, Chicken Skin, Water, Organic Maltodextrin, Organic Cane Sugar, Organic Rice Flour, Organic Onion Powder, Organic Garlic Powder, Organic Yeast Extract (Organic Bakers Yeast, Salt), Sea Salt, Organic Rice Hull Powder, Organic Rosemary Extract, Organic Parsley, Organic Thyme, Organic Cayenne Pepper, Organic Black Pepper, Organic Marjoram, Organic Sage, Organic Celery Seed, Organic Rosemary, Organic White Pepper.

**ALLERGEN FREE**



GTIN: 10738985222717

### Nutrition Facts

Serving Size 3 Meatballs (105g)  
Servings Per Container About 3

| Amount Per Serving           |                      |
|------------------------------|----------------------|
| <b>Calories</b> 160          | Calories from Fat 70 |
|                              | % Daily Value*       |
| <b>Total Fat</b> 7g          | <b>11%</b>           |
| Saturated Fat 2g             | <b>10%</b>           |
| Trans Fat 0g                 |                      |
| <b>Cholesterol</b> 90mg      | <b>30%</b>           |
| <b>Sodium</b> 290mg          | <b>12%</b>           |
| <b>Potassium</b> 300mg       | <b>9%</b>            |
| <b>Total Carbohydrate</b> 8g | <b>3%</b>            |
| Dietary Fiber 1g             | <b>4%</b>            |
| Sugars 1g                    |                      |
| <b>Protein</b> 16g           |                      |
| Vitamin A 2%                 | Vitamin C 4%         |
| Calcium 2%                   | Iron 8%              |



**22265**  
Parmesan Breaded Chicken Meatballs

**INGREDIENTS:** Chicken Leg Meat, Mozzarella Cheese (Pasteurized Part Skim Milk, Cheese Culture, Salt, Enzymes), Chicken Skin, Water, Garlic Puree, Sea Salt, Black Pepper, Parsley, Basil, Soybean Oil. Breaded with Unbleached Wheat Flour, Water, Parmesan Cheese (Pasteurized Part Skim Milk, Cheese Culture, Salt, Enzymes), Nonfat Dry Milk, Dried Whole Eggs, Sugar, Yeast, Salt, Black Pepper. Flash Fried in Organic Expeller-Pressed Soybean Oil to set Breading.

**CONTAINS:** Wheat, Milk, Eggs



GTIN: 10738985222656

### Nutrition Facts

Serving Size 3 Meatballs (114g)  
Servings Per Container About 3

| Amount Per Serving            |                       |
|-------------------------------|-----------------------|
| <b>Calories</b> 240           | Calories from Fat 110 |
|                               | % Daily Value*        |
| <b>Total Fat</b> 13g          | <b>20%</b>            |
| Saturated Fat 4.5g            | <b>23%</b>            |
| Trans Fat 0g                  |                       |
| <b>Cholesterol</b> 90mg       | <b>30%</b>            |
| <b>Sodium</b> 360mg           | <b>15%</b>            |
| <b>Potassium</b> 250mg        | <b>7%</b>             |
| <b>Total Carbohydrate</b> 15g | <b>5%</b>             |
| Dietary Fiber 2g              | <b>8%</b>             |
| Sugars 2g                     |                       |
| <b>Protein</b> 17g            |                       |
| Vitamin A 2%                  | Vitamin C 0%          |
| Calcium 15%                   | Iron 6%               |



**22222**  
IQF Cut Chicken Wings



GTIN: 10738985222229



**22223**  
Organic IQF Cut Chicken Wings



GTIN: 10738985222236

### Nutrition Facts

Serving Size 4oz (112g)  
Servings Per Container Varied

| Amount Per Serving           |                       |
|------------------------------|-----------------------|
| <b>Calories</b> 190          | Calories from Fat 100 |
|                              | % Daily Value*        |
| <b>Total Fat</b> 11g         | <b>17%</b>            |
| Saturated Fat 3g             | <b>15%</b>            |
| Trans Fat 0g                 |                       |
| <b>Cholesterol</b> 120mg     | <b>40%</b>            |
| <b>Sodium</b> 105mg          | <b>4%</b>             |
| <b>Potassium</b> 105mg       | <b>3%</b>             |
| <b>Total Carbohydrate</b> 0g | <b>0%</b>             |
| Dietary Fiber 0g             | <b>0%</b>             |
| Sugars 0g                    |                       |
| <b>Protein</b> 22g           |                       |
| Vitamin A 0%                 | Vitamin C 0%          |
| Calcium 2%                   | Iron 4%               |

| OTHER BULK         | PACK       | ITEM  |
|--------------------|------------|-------|
| IQF Cut Wings Bulk | 12 x 2.5lb | 22227 |
| IQF BSO Legs Bulk  | 12 x 2.5lb | 22275 |

| PRODUCT SPECS - IQF                    |  |   |
|--|--|---|
| <b>SHELF LIFE:</b> Frozen - 12 months  | <b>CASE WEIGHT:</b> 30 lbs                                     | <b>PALLET CUBE:</b> 64.66 ft <sup>3</sup> |
| <b>CODE DATE:</b> Best By Date On Pack | <b>TI HI:</b> 8 x 5  |   |
| <b>PACK:</b> 12 - 2.5 lb Bags          | <b>CASE:</b> 19.875" x 10.5" x 12.375" (1.49 ft <sup>3</sup> ) |   |

*What is IQF?*  
Individually quick frozen with no ice glaze, no added water, no marinade.



### PRODUCT SPECS - Meatballs

|  |   |   |
|--|---|---|
| <b>SHELF LIFE:</b> Frozen - 12 months  | <b>PACK:</b> 12 - 12 oz                   | <b>CASE:</b> 19.99" x 8.24" x 8.98" (0.86 ft <sup>3</sup> ) |
| <b>CODE DATE:</b> Best By Date On Pack | <b>TI HI:</b> 12 x 7                      | <b>PALLET CUBE:</b> 78.02 ft <sup>3</sup>                   |
| <b>CASE WEIGHT:</b> 9 lbs              | <b>BOX DIMENSIONS:</b> 7.13" x 6.25" x 2" |   |

# Resealable Bags

# Resealable Bags



**20189**  
Fully Cooked Grilled Diced Chicken Breast Pieces



**22366**  
Breaded Chicken Breast Tenders

**INGREDIENTS:**  
Boneless, Skinless Chicken Breast Meat, Water, Rice Starch, Sea Salt.

**ALLERGEN FREE**



GTIN: 10738985201896

### COOKING USES

- Soups
- Salads
- Appetizers
- Casseroles
- Dips
- AND MORE

### Nutrition Facts

|  |                |
|--|----------------|
| Serving Size 3oz (84g)                   |                |
| Servings Per Container About 9           |                |
| Amount Per Serving                       |                |
| <b>Calories 100</b> Calories from Fat 15 |                |
|  | % Daily Value* |
| <b>Total Fat</b> 1.5g                    | <b>2%</b>      |
| Saturated Fat 0g                         | <b>0%</b>      |
| Trans Fat 0g                             |                |
| <b>Cholesterol</b> 65mg                  | <b>22%</b>     |
| <b>Sodium</b> 180mg                      | <b>8%</b>      |
| <b>Potassium</b> 410mg                   | <b>12%</b>     |
| <b>Total Carbohydrate</b> 1g             | <b>0%</b>      |
| Dietary Fiber 0g                         | <b>0%</b>      |
| Sugars 0g                                |                |
| <b>Protein</b> 20g                       |                |
| Vitamin A 0%                             | Vitamin C 0%   |
| Calcium 0%                               | Iron 2%        |

## 22301

Breaded Chicken Breast Nuggets

**INGREDIENTS:**  
Chicken Breast Meat Marinated in Water and Sea Salt. Breaded with Unbleached Wheat Flour, Yeast, Sea Salt, Black Pepper, Paprika. Flash Fried in Organic Expeller Pressed Soybean Oil to set Breading.

**CONTAINS:** Wheat

### Nutrition Facts

|  |                |
|--|----------------|
| Serving Size 4oz (112g)                  |                |
| Servings Per Container 7.5               |                |
| Amount Per Serving                       |                |
| <b>Calories 200</b> Calories from Fat 80 |                |
|  | % Daily Value* |
| <b>Total Fat</b> 9g                      | <b>14%</b>     |
| Saturated Fat 1.5g                       | <b>8%</b>      |
| Trans Fat 0g                             |                |
| <b>Cholesterol</b> 50mg                  | <b>17%</b>     |
| <b>Sodium</b> 360mg                      | <b>15%</b>     |
| <b>Potassium</b> 320mg                   | <b>9%</b>      |
| <b>Total Carbohydrate</b> 10g            | <b>3%</b>      |
| Dietary Fiber 0g                         | <b>0%</b>      |
| Sugars 2g                                |                |
| <b>Protein</b> 21g                       |                |
| Vitamin A 0%                             | Vitamin C 0%   |
| Calcium 0%                               | Iron 0%        |



GTIN: 10738985223011

## 22302

Breaded Chicken Patties

**INGREDIENTS:** Chicken, Sea Salt. Breaded with Unbleached Wheat Flour, Water, Cane Sugar, Yeast, Sea Salt, Black Pepper, Paprika. Flash Fried in Organic Expeller Pressed Soybean Oil to set Breading.

**CONTAINS** Wheat

### Nutrition Facts

|  |                |
|--|----------------|
| Serving Size 1 Patty 4oz (112g)          |                |
| Servings Per Container 9                 |                |
| Amount Per Serving                       |                |
| <b>Calories 200</b> Calories from Fat 90 |                |
|  | % Daily Value* |
| <b>Total Fat</b> 10g                     | <b>15%</b>     |
| Saturated Fat 2g                         | <b>10%</b>     |
| Trans Fat 0g                             |                |
| <b>Cholesterol</b> 60mg                  | <b>20%</b>     |
| <b>Sodium</b> 280mg                      | <b>12%</b>     |
| <b>Potassium</b> 310mg                   | <b>9%</b>      |
| <b>Total Carbohydrate</b> 10g            | <b>3%</b>      |
| Dietary Fiber 0g                         | <b>0%</b>      |
| Sugars 3g                                |                |
| <b>Protein</b> 19g                       |                |
| Vitamin A 2%                             | Vitamin C 0%   |
| Calcium 0%                               | Iron 8%        |



GTIN: 10738985223028

## 22303

Chicken Meatballs

**INGREDIENTS:**  
Chicken Leg Meat, Chicken Skin, Water, Organic Maltodextrin, Organic Cane Sugar, Organic Rice Flour, Organic Onion Powder, Organic Garlic Powder, Organic Yeast Extract (Organic Bakers Yeast, Salt), Sea Salt, Organic Rice Hull Powder, Organic Rosemary Extract, Organic Parsley, Organic Thyme, Organic Cayenne Pepper, Organic Black Pepper, Organic Marjoram, Organic Sage, Organic Celery Seed, Organic Rosemary, Organic White Pepper.

**ALLERGEN FREE**

### Nutrition Facts

|  |                |
|--|----------------|
| Serving Size 3 Meatballs (105g)          |                |
| Servings Per Container About 8           |                |
| Amount Per Serving                       |                |
| <b>Calories 160</b> Calories from Fat 70 |                |
|  | % Daily Value* |
| <b>Total Fat</b> 7g                      | <b>11%</b>     |
| Saturated Fat 2g                         | <b>10%</b>     |
| Trans Fat 0g                             |                |
| <b>Cholesterol</b> 90mg                  | <b>30%</b>     |
| <b>Sodium</b> 290mg                      | <b>12%</b>     |
| <b>Potassium</b> 300mg                   | <b>9%</b>      |
| <b>Total Carbohydrate</b> 8g             | <b>3%</b>      |
| Dietary Fiber 1g                         | <b>4%</b>      |
| Sugars 1g                                |                |
| <b>Protein</b> 16g                       |                |
| Vitamin A 2%                             | Vitamin C 4%   |
| Calcium 2%                               | Iron 8%        |



GTIN: 10738985223035

### PRODUCT SPECS - Reseal Bags

|   |  |  |
|---|--|--|
| <b>SHELF LIFE:</b> Frozen - 12 months             | <b>PACK:</b> 12 Bags / Patties: 9 Bags | <b>CASE:</b> 20" x 10.25" x 11" (1.3 ft <sup>3</sup> ) |
| <b>CODE DATE:</b> Best By Date On Pack            | <b>TI HI:</b> 8 x 5                    | <b>PALLET CUBE:</b> 66.67 ft <sup>3</sup>              |
| <b>CASE WEIGHT:</b> 22.5 lbs / Patties: 20.25 lbs | <b>RETAIL BAGS:</b> 11" x 10.25"       |  |

### PRODUCT SPECS - Reseal Bags

|  |                                   |  |
|--|-----------------------------------|--|
| <b>SHELF LIFE:</b> Frozen - 12 months  | <b>CASE WEIGHT PIECES:</b> 21 lbs | <b>RETAIL BAGS:</b> 11" x 10.25"                       |
| <b>CODE DATE:</b> Best By Date On Pack | <b>PACK:</b> 12 Bags              | <b>CASE:</b> 20" x 10.25" x 11" (1.3 ft <sup>3</sup> ) |
| <b>CASE WEIGHT TENDERS:</b> 22.5 lbs   | <b>TI HI:</b> 8 x 5               | <b>PALLET CUBE:</b> 66.67 ft <sup>3</sup>              |

Gluten Free

Gluten Free



# 22306 Breaded Chicken Patties

The all natural ingredients in our gluten free chicken patties separate us from the other patties. Our gluten free breading is perfect for celiac sufferers and a gluten free alternative.

**INGREDIENTS:** Chicken, Sea Salt. Breaded with Rice Flour, Water, Yellow Corn Flour, Sea Salt, Xanthan Gum, Cane Sugar, Yeast, Dried Whole Eggs, Black Pepper, Onion Powder, Garlic Powder. Flash fried in Organic Expeller-Pressed Soybean Oil to set breading.

**CONTAINS:** Egg

| Nutrition Facts                 |                      |
|---------------------------------|----------------------|
| Serving Size 1 Patty 4oz (112g) |                      |
| Servings Per Container 4        |                      |
| Amount Per Serving              |                      |
| <b>Calories</b> 200             | Calories from Fat 70 |
| % Daily Value*                  |                      |
| <b>Total Fat</b> 8g             | 12%                  |
| Saturated Fat 2g                | 10%                  |
| Trans Fat 0g                    |                      |
| <b>Cholesterol</b> 65mg         | 22%                  |
| <b>Sodium</b> 310mg             | 13%                  |
| <b>Potassium</b> 290mg          | 8%                   |
| <b>Total Carbohydrate</b> 12g   | 4%                   |
| Dietary Fiber 0g                | 0%                   |
| Sugars 0g                       |                      |
| <b>Protein</b> 19g              |                      |
| Vitamin A 2%                    | Vitamin C 0%         |
| Calcium 0%                      | Iron 0%              |



## “ Customer Testimonial—

*Bell & Evans Gluten Free, and all products are the best ever! I loved the chicken patties. I put them in the oven for 25 min. When done I add spaghetti sauce, topped with mozzarella cheese. What a great quick meal! We love it!*

—Barbara L.

### PRODUCT SPECS - GF Patties

|  |   |  |
|--|---|--|
| <b>SHELF LIFE:</b> Frozen - 12 months  | <b>PACK:</b> 9 - 16 oz Boxes                | <b>CASE:</b> 19.99" x 8.24" x 8.98" (0.86 ft³) |
| <b>CODE DATE:</b> Best By Date On Pack | <b>TI HI:</b> 12 x 7                        | <b>PALLET CUBE:</b> 78.02 ft³                  |
| <b>CASE WEIGHT:</b> 9 lbs              | <b>BOX DIMENSIONS:</b> 7.13" x 6.25" x 2.5" |  |



# 22229 Gluten Free Breaded Chicken Breast Nuggets

**INGREDIENTS:** Chicken Breast Meat Marinated in Water and Sea Salt. Breaded with Rice Flour, Water, Yellow Corn Flour, Sea Salt, Xanthan Gum, Cane Sugar, Yeast, Dried Whole Eggs, Black Pepper, Onion Powder, Garlic Powder. Flash fried in Organic Expeller-Pressed Soybean Oil to set breading.

**CONTAINS:** Egg

| Nutrition Facts               |                      |
|-------------------------------|----------------------|
| Serving Size 4oz (112g)       |                      |
| Servings Per Container 3      |                      |
| Amount Per Serving            |                      |
| <b>Calories</b> 190           | Calories from Fat 60 |
| % Daily Value*                |                      |
| <b>Total Fat</b> 6g           | 9%                   |
| Saturated Fat 1g              | 5%                   |
| Trans Fat 0g                  |                      |
| <b>Cholesterol</b> 50mg       | 17%                  |
| <b>Sodium</b> 400mg           | 17%                  |
| <b>Potassium</b> 330mg        | 9%                   |
| <b>Total Carbohydrate</b> 13g | 4%                   |
| Dietary Fiber 0g              | 0%                   |
| Sugars 2g                     |                      |
| <b>Protein</b> 20g            |                      |
| Vitamin A 0%                  | Vitamin C 4%         |
| Calcium 0%                    | Iron 4%              |



# 22198 Gluten Free Breaded Chicken Breast Tenders

**INGREDIENTS:** Chicken Breast Meat Tenders Marinated in Water and Sea Salt. Breaded with Rice Flour, Water, Yellow Corn Flour, Sea Salt, Xanthan Gum, Cane Sugar, Yeast, Dried Whole Eggs, Black Pepper, Onion Powder, Garlic Powder. Flash fried in Organic Expeller-Pressed Soybean Oil to set breading.

**CONTAINS:** Egg

| Nutrition Facts               |                      |
|-------------------------------|----------------------|
| Serving Size 4oz (112g)       |                      |
| Servings Per Container 3      |                      |
| Amount Per Serving            |                      |
| <b>Calories</b> 190           | Calories from Fat 50 |
| % Daily Value*                |                      |
| <b>Total Fat</b> 6g           | 9%                   |
| Saturated Fat 1g              | 5%                   |
| Trans Fat 0g                  |                      |
| <b>Cholesterol</b> 45mg       | 15%                  |
| <b>Sodium</b> 390mg           | 16%                  |
| <b>Potassium</b> 350mg        | 10%                  |
| <b>Total Carbohydrate</b> 14g | 5%                   |
| Dietary Fiber 1g              | 4%                   |
| Sugars 2g                     |                      |
| <b>Protein</b> 19g            |                      |
| Vitamin A 0%                  | Vitamin C 2%         |
| Calcium 0%                    | Iron 0%              |



# 22208 Gluten Free Boneless Skinless Breads Chicken Breast

**INGREDIENTS:** Chicken Breast Meat Marinated in Water and Sea Salt. Breaded with Rice Flour, Water, Yellow Corn Flour, Sea Salt, Xanthan Gum, Cane Sugar, Yeast, Dried Whole Eggs, Black Pepper, Onion Powder, Garlic Powder. Flash fried in Organic Expeller-Pressed Soybean Oil to set breading.

**CONTAINS:** Egg

| Nutrition Facts                    |                      |
|------------------------------------|----------------------|
| Serving Size 1 Filet 5.25oz (149g) |                      |
| Servings Per Container About 2     |                      |
| Amount Per Serving                 |                      |
| <b>Calories</b> 230                | Calories from Fat 45 |
| % Daily Value*                     |                      |
| <b>Total Fat</b> 5g                | 8%                   |
| Saturated Fat 1g                   | 5%                   |
| Trans Fat 0g                       |                      |
| <b>Cholesterol</b> 65mg            | 22%                  |
| <b>Sodium</b> 580mg                | 24%                  |
| <b>Potassium</b> 410mg             | 12%                  |
| <b>Total Carbohydrate</b> 21g      | 7%                   |
| Dietary Fiber 0g                   | 0%                   |
| Sugars 2g                          |                      |
| <b>Protein</b> 25g                 |                      |
| Vitamin A 0%                       | Vitamin C 0%         |
| Calcium 2%                         | Iron 0%              |



### PRODUCT SPECS - Gluten Free

|  |   |  |
|--|---|--|
| <b>SHELF LIFE:</b> Frozen - 12 months        | <b>PACK:</b> 12 - 12 oz Boxes           | <b>BOX DIMENSIONS:</b> 7.13" x 6.25" x 2"      |
| <b>CODE DATE:</b> Best By Date On Pack       | <b>PACK BREASTS:</b> 12 - 10.5 oz Boxes | <b>CASE:</b> 19.99" x 8.24" x 8.98" (0.86 ft³) |
| <b>CASE WEIGHT:</b> 9lbs / Breasts: 7.88 lbs | <b>TI HI:</b> 12 x 7                    | <b>PALLET CUBE:</b> 78.02 ft³                  |

## Organic Allergen Free Breaded Items

Notice anything different? Our Organic, Gluten Free items are now ALLERGEN FREE! We spent the time to reformulate the breading on our Organic items to match the same premium taste you know and love, now everyone can enjoy them!



**22310**  
Organic, GF Breaded Chicken Breast Nuggets



**22308**  
Organic, GF Breaded Chicken Breast Tenders

**DID YOU KNOW?**  
Our Organic Nuggets and Tenders are now made with new ingredients! Our ingredients are always clean without any junk.

**INGREDIENTS:**  
Organic Chicken Breast Meat Marinated in Water and Sea Salt. Breaded with Organic Yellow Corn Flour, Organic Corn Crumb (Organic Yellow Corn Flour, Sea Salt, Organic Raisin Juice Concentrate, Organic Honey), Water, Organic Yellow Corn Meal, Organic Rice Flour, Less than 2% of: Organic Soybean Oil, Sea Salt, Organic Corn Starch, Organic Garlic Powder, Organic Onion Powder, Organic Black Pepper, Organic Yeast Extract, Organic Canola Oil, Organic Extractive of Paprika. Flash fried in Organic Expeller-Pressed Soybean Oil to set breading.

**NO ALLERGENS**



GTIN: 10738985223103

**INGREDIENTS:**  
Organic Chicken Breast Meat Tenders Marinated in Water and Sea Salt. Breaded with Organic Yellow Corn Flour, Organic Corn Crumb (Organic Yellow Corn Flour, Sea Salt, Organic Raisin Juice Concentrate, Organic Honey), Water, Organic Yellow Corn Meal, Organic Rice Flour, Less than 2% of: Organic Soybean Oil, Sea Salt, Organic Corn Starch, Organic Garlic Powder, Organic Onion Powder, Organic Black Pepper, Organic Yeast Extract, Organic Canola Oil, Organic Extractive of Paprika. Flash fried in Organic Expeller-Pressed Soybean Oil to set breading.

**NO ALLERGENS**



GTIN: 10738985223080

| Nutrition Facts                                     |                      |
|---|----------------------|
| Serving Size 4oz (112g)<br>Servings Per Container 3 |                      |
| Amount Per Serving                                  |                      |
| <b>Calories</b> 180                                 | Calories from Fat 25 |
| % Daily Value*                                      |                      |
| <b>Total Fat</b> 3g                                 | <b>5%</b>            |
| Saturated Fat 0.5g                                  | <b>3%</b>            |
| Trans Fat 0g  |                      |
| <b>Cholesterol</b> 55mg                             | <b>18%</b>           |
| <b>Sodium</b> 280mg                                 | <b>12%</b>           |
| <b>Potassium</b> 650mg                              | <b>19%</b>           |
| <b>Total Carbohydrate</b> 20g                       | <b>7%</b>            |
| Dietary Fiber 1g                                    | <b>4%</b>            |
| Sugars 0g   |                      |
| <b>Protein</b> 19g                                  |                      |
| Vitamin A 0%  | Vitamin C 2%         |
| Calcium 2%  | Iron 4%              |

| Nutrition Facts                                     |                      |
|---|----------------------|
| Serving Size 4oz (112g)<br>Servings Per Container 3 |                      |
| Amount Per Serving                                  |                      |
| <b>Calories</b> 180                                 | Calories from Fat 20 |
| % Daily Value*                                      |                      |
| <b>Total Fat</b> 2g                                 | <b>3%</b>            |
| Saturated Fat 0g                                    | <b>0%</b>            |
| Trans Fat 0g  |                      |
| <b>Cholesterol</b> 50mg                             | <b>17%</b>           |
| <b>Sodium</b> 280mg                                 | <b>12%</b>           |
| <b>Potassium</b> 670mg                              | <b>19%</b>           |
| <b>Total Carbohydrate</b> 20g                       | <b>7%</b>            |
| Dietary Fiber 1g                                    | <b>4%</b>            |
| Sugars 0g   |                      |
| <b>Protein</b> 19g                                  |                      |
| Vitamin A 0%  | Vitamin C 2%         |
| Calcium 0%  | Iron 2%              |



## Bulk, Tenders & More

Our most popular frozen items packed in convenient 10lb cases. Perfect for food service, catering and prepared foods customers.



### RWA

| ITEM                             | ITEM  |
|----------------------------------|-------|
| Breaded BS Breast                | 22194 |
| Breaded Chicken Nuggets          | 22228 |
| Breaded Chicken Tenders          | 22200 |
| Breaded Coconut Chicken Tenders  | 22203 |
| Chicken Breast Scallopini        | 22123 |
| Chicken Burgers                  | 22252 |
| Chicken Meatballs                | 22272 |
| Cooked Diced Chunk Pieces 4x5lb* | 20192 |

### GLUTEN FREE

| ITEM                         | ITEM  |
|------------------------------|-------|
| GF Breaded Chicken Breast    | 22193 |
| GF Breaded Chicken Nuggets   | 22207 |
| GF Breaded Chicken Tenders   | 22201 |
| <b>ORGANIC ALLERGEN FREE</b> |       |
| ORG Breaded Chicken Tenders  | 22309 |
| ORG Breaded Chicken Nuggets  | 22311 |

\*Specs Vary.

### PRODUCT SPECS - Organic Breaded

|  |   |  |
|--|---|--|
| <b>SHELF LIFE:</b> Frozen - 12 months  | <b>PACK:</b> 12 - 12 oz                   | <b>CASE:</b> 19.99" x 8.24" x 8.98" (0.86 ft³) |
| <b>CODE DATE:</b> Best By Date On Pack | <b>TI HI:</b> 12 x 7                      | <b>PALLET CUBE:</b> 78.02 ft³                  |
| <b>CASE WEIGHT:</b> 9 lbs              | <b>BOX DIMENSIONS:</b> 7.13" x 6.25" x 2" |  |

### PRODUCT SPECS - Bulk

|  |                                |                               |
|--|--------------------------------|-------------------------------|
| <b>SHELF LIFE:</b> Frozen - 12 months  | <b>PACK:</b> 4 - 2.5 lb Bags   | <b>CASE CUBE:</b> 0.44 ft³    |
| <b>CODE DATE:</b> Best By Date On Pack | <b>TI HI:</b> 10 x 10          | <b>PALLET CUBE:</b> 57.78 ft³ |
| <b>CASE WEIGHT:</b> 10 lbs             | <b>CASE:</b> 16" x 10" x 4.75" |                               |

# Fried Chicken *New!*

## Fried Chicken is not a seasonal item, it's a staple program!

- From the hot bar to grab 'n' go and picnic bundles, fried chicken can drive more sales with reduced labor costs and better in-stock position.
- It also creates continuity between Prepared Foods and Meat Departments with quality that sells itself.
- Experiencing high volume periods? Fried chicken offers a faster recovery time, as well as, reduced fryer costs and usage.

### DID YOU KNOW?

About 25% of all restaurants feature some type of fried chicken.

Approximately 75% of Americans eat some type of fried chicken.

| ITEM NUMBER | PRODUCT DESCRIPTION  | CASE PACK   |        |       |       |       |     |       |
|-------------|--|---|--------|-------|-------|-------|-----|-------|
| 22376       | <b>Bone In Fried Chicken Breast Quarters</b><br>Breaded Skinless Chicken Breast Portions with Rib Meat – Fry at 325° F for approximately 20-30 minutes, or internal temperature of 165° F.<br>GTIN: 10738985223769   | <b>2 - 5lb Bags</b><br><table border="1"> <tr> <th>Pc/Bag</th> <th>Pc/lb</th> <th>Oz/Pc</th> </tr> <tr> <td>8-9</td> <td>1.7</td> <td>9.4oz</td> </tr> </table>   | Pc/Bag | Pc/lb | Oz/Pc | 8-9   | 1.7 | 9.4oz |
| Pc/Bag      | Pc/lb  | Oz/Pc   |        |       |       |       |     |       |
| 8-9         | 1.7  | 9.4oz   |        |       |       |       |     |       |
| 22377       | <b>Bone In Fried Chicken Drumsticks</b><br>Breaded and par fried Bone In Skinless Chicken Drumsticks – Fry at 325° F for approximately 18-22 minutes, or internal temperature of 165° F.<br>GTIN: 10738985223776   | <b>2 - 5lb Bags</b><br><table border="1"> <tr> <th>Pc/Bag</th> <th>Pc/lb</th> <th>Oz/Pc</th> </tr> <tr> <td>16-17</td> <td>3.3</td> <td>4.8oz</td> </tr> </table> | Pc/Bag | Pc/lb | Oz/Pc | 16-17 | 3.3 | 4.8oz |
| Pc/Bag      | Pc/lb  | Oz/Pc   |        |       |       |       |     |       |
| 16-17       | 3.3  | 4.8oz   |        |       |       |       |     |       |
| 22378       | <b>Bone In Fried Whole Wings</b><br>Breaded and par fried Whole Chicken Wings – Fry at 325° F for approximately 15-18 minutes, or internal temperature of 165° F.<br>GTIN: 10738985223783  | <b>2 - 5lb Bags</b><br><table border="1"> <tr> <th>Pc/Bag</th> <th>Pc/lb</th> <th>Oz/Pc</th> </tr> <tr> <td>19-20</td> <td>3.9</td> <td>4.1oz</td> </tr> </table> | Pc/Bag | Pc/lb | Oz/Pc | 19-20 | 3.9 | 4.1oz |
| Pc/Bag      | Pc/lb  | Oz/Pc   |        |       |       |       |     |       |
| 19-20       | 3.9  | 4.1oz   |        |       |       |       |     |       |
| 22379       | <b>Bone In Fried Chicken Thighs</b><br>Breaded and par fried Bone In Skinless Chicken Thighs – Fry at 325° F for approximately 15-20 minutes, or internal temperature of 165° F.<br>GTIN: 10738985223790   | <b>2 - 5lb Bags</b><br><table border="1"> <tr> <th>Pc/Bag</th> <th>Pc/lb</th> <th>Oz/Pc</th> </tr> <tr> <td>12</td> <td>2.4</td> <td>6.7oz</td> </tr> </table>    | Pc/Bag | Pc/lb | Oz/Pc | 12    | 2.4 | 6.7oz |
| Pc/Bag      | Pc/lb  | Oz/Pc   |        |       |       |       |     |       |
| 12          | 2.4  | 6.7oz   |        |       |       |       |     |       |
| 22392       | <b>Fried Chicken Tenders</b><br>Whole muscle, trimmed tenders batter and breaded with a deep fry formulation. Fry at 325° F for approximately 6-8 minutes, or internal temperature of 165° F.<br>GTIN: 10738985223929  | <b>2 - 5lb Bags</b><br><table border="1"> <tr> <th>Pc/Bag</th> <th>Pc/lb</th> <th>Oz/Pc</th> </tr> <tr> <td>32</td> <td>6.4</td> <td>2.5oz</td> </tr> </table>    | Pc/Bag | Pc/lb | Oz/Pc | 32    | 6.4 | 2.5oz |
| Pc/Bag      | Pc/lb  | Oz/Pc   |        |       |       |       |     |       |
| 32          | 6.4  | 2.5oz   |        |       |       |       |     |       |
| 22393       | <b>Fried Boneless Chicken Breast</b><br>Portioned Boneless Skinless Breast cutlet batter and breaded for deep fry. Great for sandwich application. Fry at 325° F for approximately 12-14 minutes, or internal temperature of 165° F.<br>GTIN: 10738985223936 | <b>2 - 5lb Bags</b><br><table border="1"> <tr> <th>Pc/Bag</th> <th>Pc/lb</th> <th>Oz/Pc</th> </tr> <tr> <td>12-13</td> <td>2.5</td> <td>6.4oz</td> </tr> </table> | Pc/Bag | Pc/lb | Oz/Pc | 12-13 | 2.5 | 6.4oz |
| Pc/Bag      | Pc/lb  | Oz/Pc   |        |       |       |       |     |       |
| 12-13       | 2.5  | 6.4oz   |        |       |       |       |     |       |



# QUICK REFERENCE



# Organic STANDARD CASE SET

# Organic STANDARD CASE SET

## Organic Case Set

When designing your organic offerings, consider including these items for full sales opportunities.

Check out our organic merchandising pieces to complete your display.



**22011**  
Organic Boneless, Skinless Chicken Breasts



**22014**  
Organic Cut Chicken Wings



**22117**  
Organic Boneless, Skinless Chicken Tenders



**22018**  
Organic Chicken Legs



**22012**  
Organic Boneless, Skinless Chicken Thighs



**22016**  
Organic Chicken Drumsticks



**22298**  
Organic Thin Sliced BS Chicken Breasts



**22020**  
Organic Chicken Thighs



**22019**  
Organic Split Halves Chicken Breasts



**20190**  
Organic Chicken Bone Broth



**22163**  
Organic Ground Chicken



**22010**  
Organic Whole Chicken



**22052**  
Organic Chicken Livers



**22077**  
Organic Chicken Gizzards



**22078**  
Organic Chicken Hearts

# Raised Without Antibiotics STANDARD CASE SET

# Raised Without Antibiotics STANDARD CASE SET



**22003**

Boneless, Skinless  
Chicken Breasts



**22007**

Cut Chicken  
Wings



**22001**

Boneless, Skinless  
Chicken Tenders



**22009**

Chicken  
Legs



**22354**

Boneless, Skin-On  
Breasts



**22070**

100% Breast Meat  
Ground Chicken



**22076**

100% Leg Meat  
Ground Chicken



**22042**

8 Piece  
Cut



**22023**

Thin Sliced  
BS Chicken Breasts



**22005**

Boneless, Skinless  
Chicken Thighs



**22008**

Chicken  
Drumsticks



**22022**

Chicken  
Thighs



**22104**

Spatchcock  
Cut Chicken



**22397**

Cubed Chicken  
Pieces



**22400**

Chicken  
Meatloaf



**22399**

Fajita Style  
Cut Chicken



**22021**

Split Halves  
Chicken Breasts



**22345**

Chicken Drumstick  
Lollipops



**22297**

Chicken  
Halves



**22355**

Boneless, Skin-On  
Thighs



**22051**

Chicken  
Livers



**22120**

Chicken  
Gizzards



**22121**

Chicken  
Hearts



**22000**

Whole  
Chicken

# Value Added Products STANDARD CASE SET

# Value Added Products STANDARD CASE SET



**22230**

Breaded Chicken Breast Nuggets



**22199**

Breaded Chicken Breast Tenders



**22202**

Coconut Breaded Chicken Breast Tenders



**22229**

GF Breaded Chicken Breast Nuggets



**22198**

GF Breaded Chicken Breast Tenders



**22208**

GF Breaded BS Chicken Breast



**22195**

Breaded BS Chicken Breast



**22304**

Breaded Chicken Patties



**22305**

Italian Breaded Chicken Patties



**22306**

GF Breaded Chicken Patties



**22310**

Organic Breaded Chicken Breast Nuggets



**22308**

Organic Breaded Chicken Breast Tenders



**22271**

Chicken Meatballs



**22265**

Parmesan Breaded Chicken Meatballs



**22307**

Chicken Burgers



**22301**

Breaded Chicken Breast Nugget Reseal Bag



**22303**

Chicken Meatball Reseal Bag



**22302**

Breaded Chicken Patties Reseal Bag



**22291**

Bacon Cheddar Chicken Burgers



**20641**

Chicken Franks



**20189**

Fully Cooked Diced Chicken Breast Reseal Bag



**22366**

Breaded Chicken Breast Tenders Reseal Bag

# Merchandising

There are many facets to merchandising, but elevated, in-stock displays are the easiest way to build baskets and positively influence sales.



## Create Color Breaks

Use skin-on products to break up the set.

*Example:* Place Split Breasts between Boneless and Thin Slice Breasts or Tenders.



## Group Similar Products

Keep similar cuts merchandised together.

*Example:* Group various breast meat items, dark meat items, Whole Birds, Organic products, and Family Packs.



## Optimize at Eye Level

Use prime real estate for NEW or seasonal items for the most exposure.

*Example:* Spatchcock or BBQ Half at grilling season earns eye level.

## Use Point of Sale Materials!

Point of sale materials act as your *Silent Salesman*. These valuable tools educate the consumer about the brand and define the retail set. Be careful not to over-do it though, as too much POS can clutter or obstruct the case. Good use of POS helps organize your set.

### Holding Power: Never Run Out!

Be sure to have enough facings or shelf space to remain in-stock of top moving items, both with Fresh and Frozen offerings!

## Block Out Sets

A block system helps define the set or available real estate. Working in squares and rectangles helps create a clean, organized look. The key is to make items easy to find for consumers.

Horizontal = sets with "like" items  
Vertical = sets to define space (color breaks)

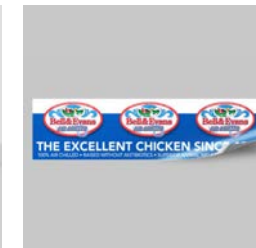
# Point of Sale



SMALL DIVIDER 8" X 14"



LARGE DIVIDER 8" X 21"



STATIC CLING 3"



MARQUIS SIGN



CHANNEL STRIP 10" & 40"



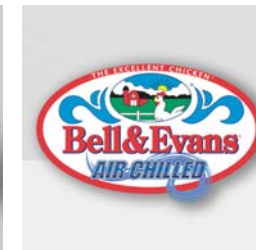
HEADER  
CALLOUT



PACKAGING DANGLER



CORPORATE BROCHURE



LOGO SIGN 30" x 16"



LOGO SIGN 30" x 16"



SMALL DIVIDER 8" X 14"



LARGE DIVIDER 8" X 21"



BROTH COUNTER CARD  
RECIPE HOLDER



BROTH FLOOR  
CLING



CHANNEL STRIP 10" & 40"



PROUDLY SERVING  
HEAT PROOF CLING



NEW CHANNEL STRIP 5.75"



NEW STATIC CLING 11"



CLEAR BROCHURE AND  
SIGN HOLDER



RECIPE CARD HOLDER  
CHANNEL STRIP

Access these materials and more on our Business Partner Website. FREE for your use to drive sales.



# Partner Resources Online

The Bell & Evans Business Partner Website gives you access to timely communications, valuable sales tools and education. The website is free, easy to use and convenient!



## Easy Access To:

- Packaging Graphics
- Channel Strips
- Meat Case Dividers
- Videos
- Shelf Talkers
- Static Clings
- Brochures
- And More

## Bell & Evans University

On the Business Partner Website, you and your team now have access to **Bell & Evans University**. Become an expert on all things Excellent Chicken.



### What is BE University?

An online training tool to become a Bell & Evans expert; for training meat managers, sales reps and meat teams on Bell & Evans differences.

Ask Your Account Manager to Get Started!

- Bell & Evans 101
- Quizzes
- Webinars
- Levels
- Free Giveaways

Access through the Bell & Evans Business Partner Website:

[partners.bellandevans.com](https://partners.bellandevans.com)

## HOW TO SIGN UP

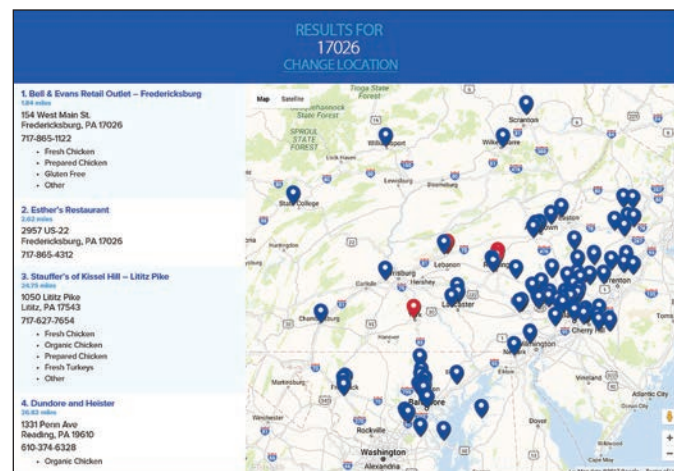
- ✓ Go to the Website [partners.bellandevans.com](https://partners.bellandevans.com)
- ✓ Click On "Don't Have An Account"
- ✓ Fill Out the Form
- ✓ Click On "Register"



Scan Here to Sign Up

## Join Our Product Locator—

Consumers can quickly find Bell & Evans products, even identifying product offerings by location! If your business is not on the list, complete the form under "Contact Us" to be added!



## TAG US @BellandEvans

If you have a campaign or promotion of Bell & Evans products and would like our support, tag us and leverage our brand reach. Paid ad campaigns also available.

## BELLANDEVANS.COM

Visit our website to learn everything you need to know about our standards and practices including;

- Cooking Blogs
- Product Information
- Our Standards
- Virtual Tours
- Company Timeline
- AND MORE!

